

PLATE NOTES

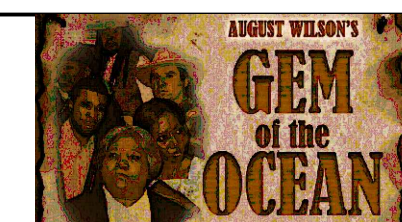
- 1) MATERIAL: 1/2" plywood TYP.
- 2) MATERIAL: 2x2x3/8" angle iron
- 3) MATERIAL: 1/8" 7x19 black GAC
- 4) MATERIAL: 3/4" plywood
- 5) MATERIAL: 1/4" plywood
- 6) SIZE: Groove cut with 60DEG V-groove bit; Depth TBD; 3/4" ply scabs cut on CNC
- 7) "Lath" strips

GENERAL NOTES

- See cable layout on WAL-1.1
- Sections will be scabbed together once walls are hung in place.
- All pieces are cut on the CNC
- Bottom piece of lath is straight and everything can be modeled off of it.

SUBMITTALS

#	DESCRIPTION	DATE
1	Initial Draftings	06/05/2019
2	Shop Drawings	07/14/2019
3		
4		
5		



Gem of the Ocean

Illinois Theatre

Colwell Playhouse

Scenic Designer
Linda Buchanan
Technical Director
Naomie S. Winch
Assistant Technical Director
Patrick Storey
Master Carpenter

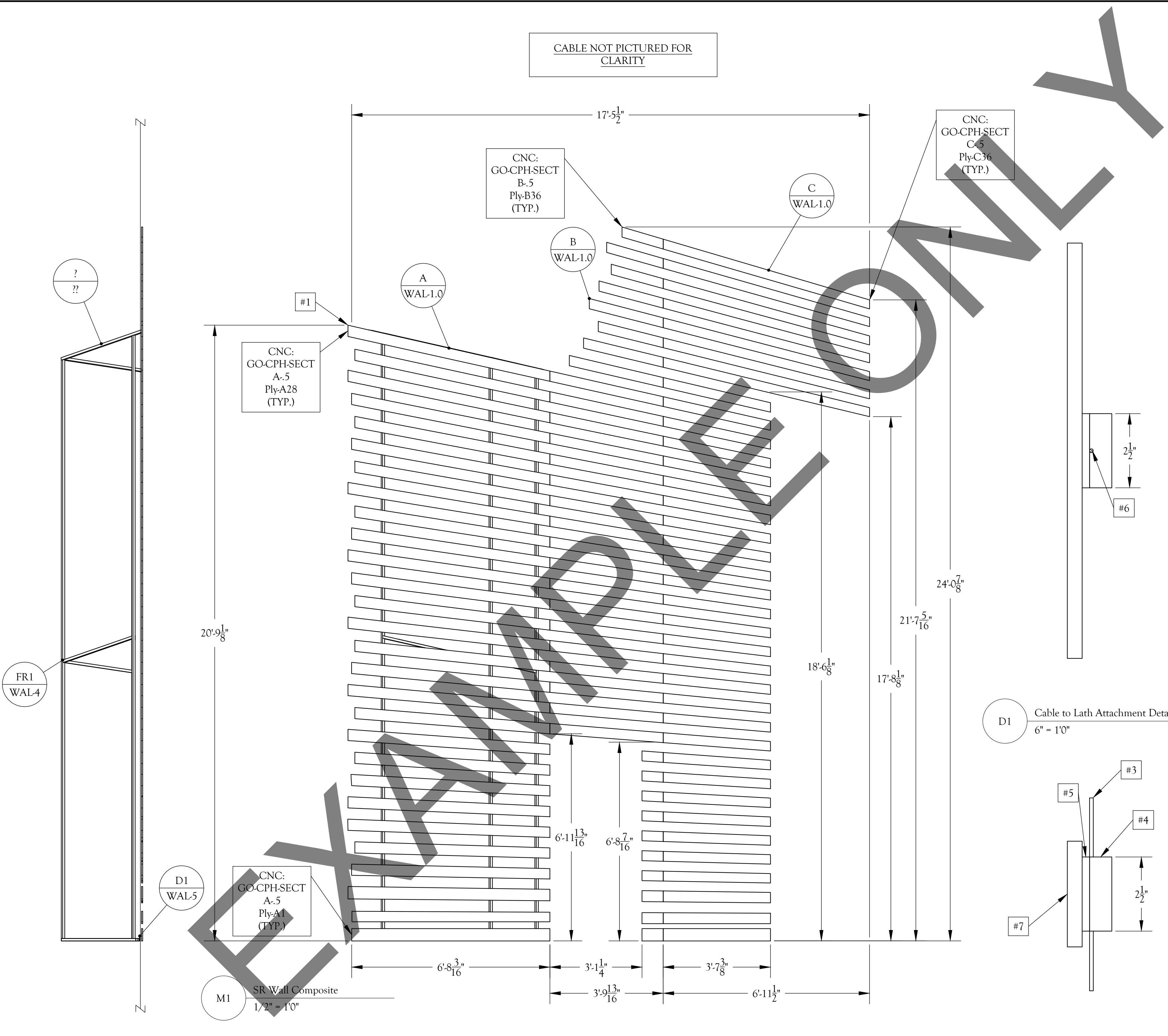
SR Wall Composite

SCALE 1/2" = 1'0" DRAWN BY NSMW

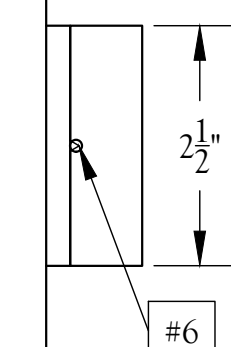
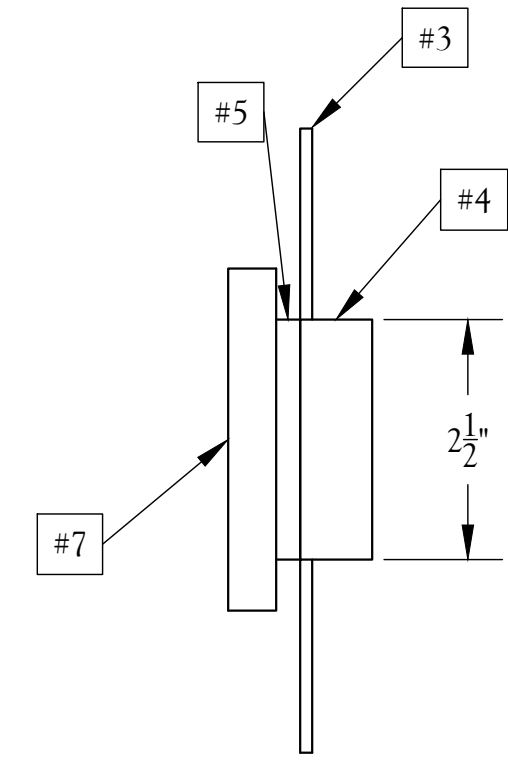
BUILT/SIGNED OFF BY

SR WALL
WAL-1.0

CABLE NOT PICTURED FOR CLARITY



D1 Cable to Lath Attachment Detail
6" = 1'0"



?
??

FR1
WAL-4

D1
WAL-5

M1

#1

A
WAL-1.0

B
WAL-1.0

C
WAL-1.0

CNC:
GO-CPH-SECT
C-5
Ply-C36
(TYP.)

CNC:
GO-CPH-SECT
B-5
Ply-B36
(TYP.)

CNC:
GO-CPH-SECT
A-5
Ply-A28
(TYP.)

CNC:
GO-CPH-SECT
A-5
Ply-A1
(TYP.)

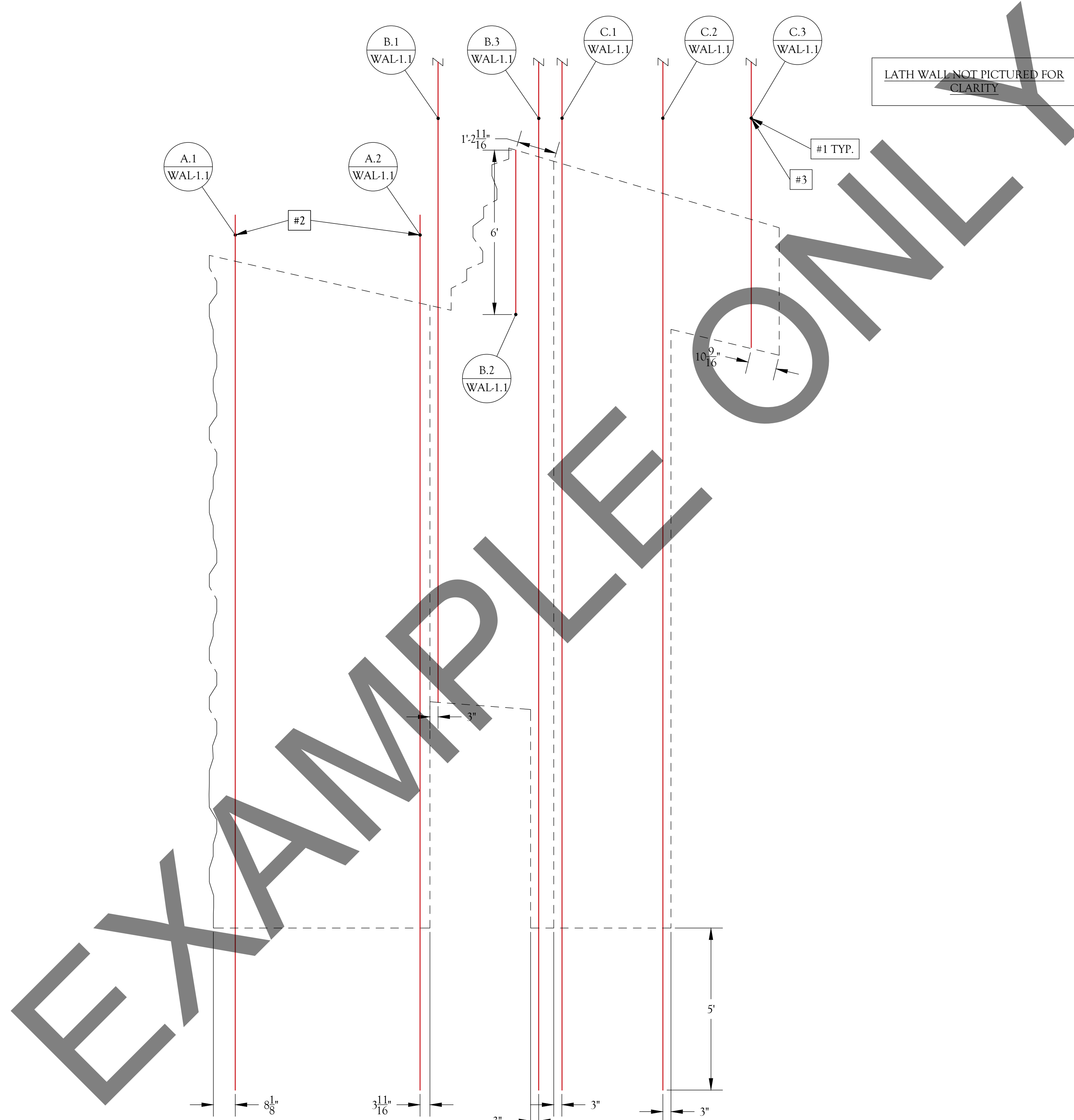


PLATE NOTES

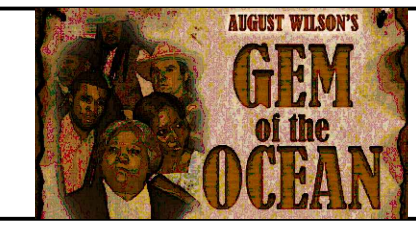
- 1) MATERIAL: 3/8" 7x19 black GAC
- 2) Do not terminate top end of these cables. Also, these cables total length is 21' not to typical 45'.
- 3) Do not terminate top end of this cable. This cables total length is 22'1" not the typical 45'.

GENERAL NOTES

- Each cable is 45' long; cut to this length and then mark out lengths
- Measurements are to the top of the lath board when assembling
- See supplemental excel spreadsheet for marking cables.
- Dashed lines indicate lath board seams (see WAL-1.0 for layout)
- Cables attach to batten with trim chain and shackle.

SUBMITTALS

#	DESCRIPTION	DATE
1	Initial Draftings	06/05/2019
2	Shop Drawings	07/14/2019
3		
4		
5		



Gem of the Ocean

Illinois Theatre

Colwell Playhouse

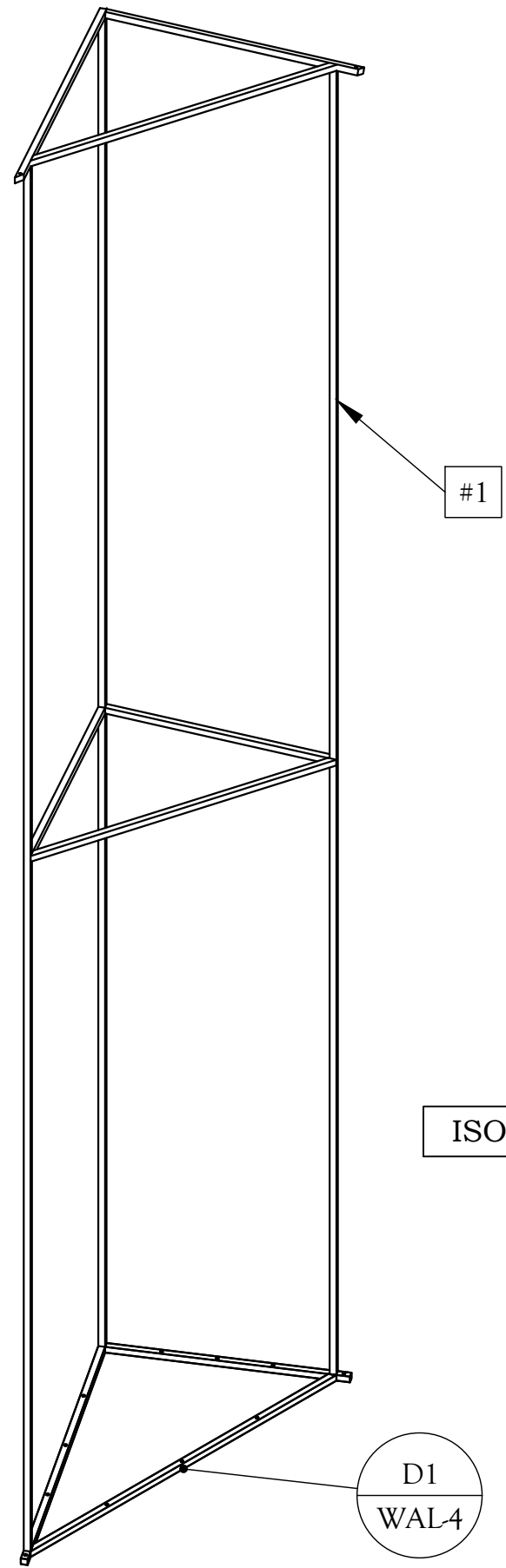
Scenic Designer
Linda Buchanan
Technical Director
Naomie S. Winch
Assistant Technical Director
Patrick Storey
Master Carpenter

SR Wall Cable Layout

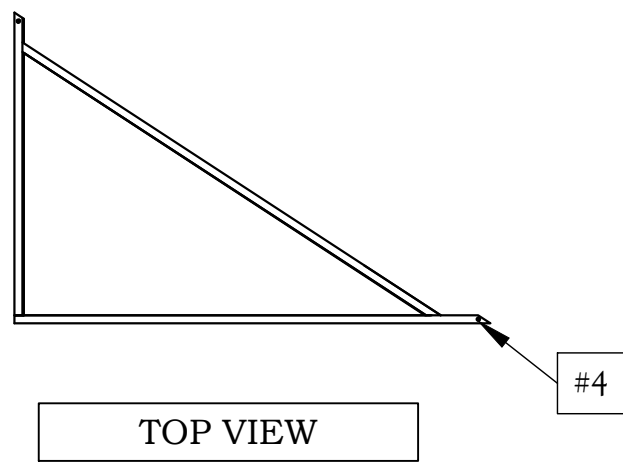
SCALE 1/2" = 10"	DRAWN BY NSMW
---------------------	------------------

BUILT/SIGNED OFF BY

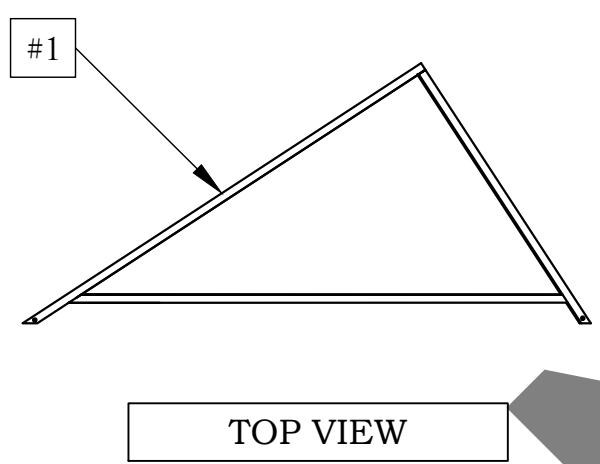
SR WALL
WAL-1.1



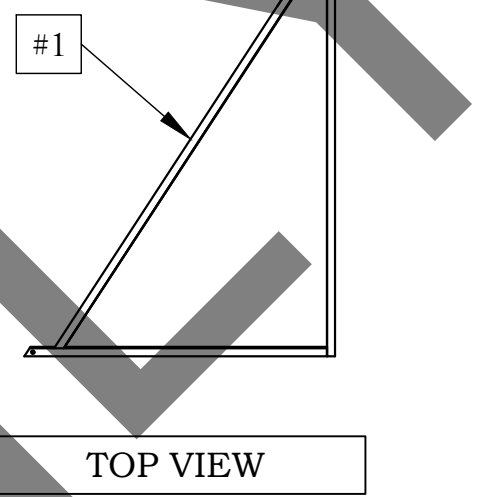
ISOMETRIC VIEW



TOP VIEW

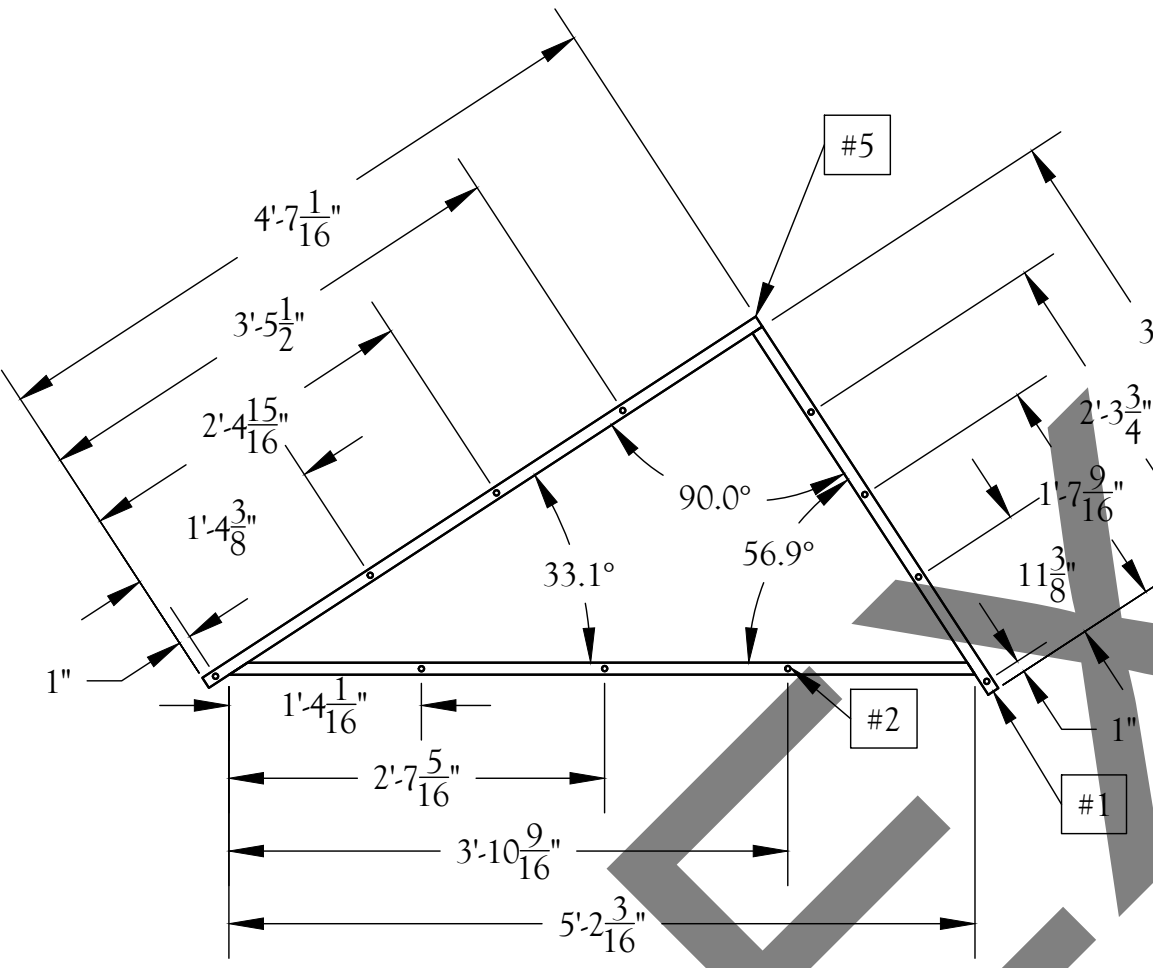


TOP VIEW

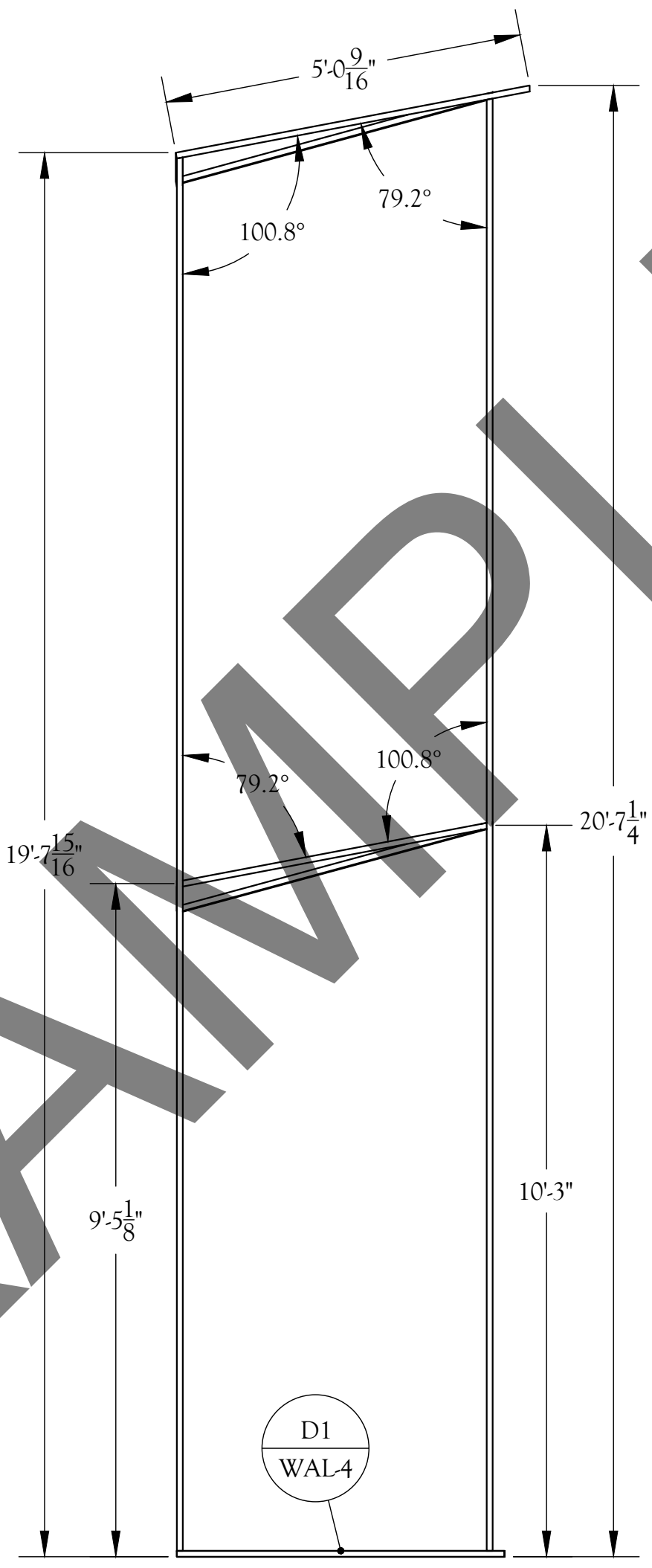


TOP VIEW

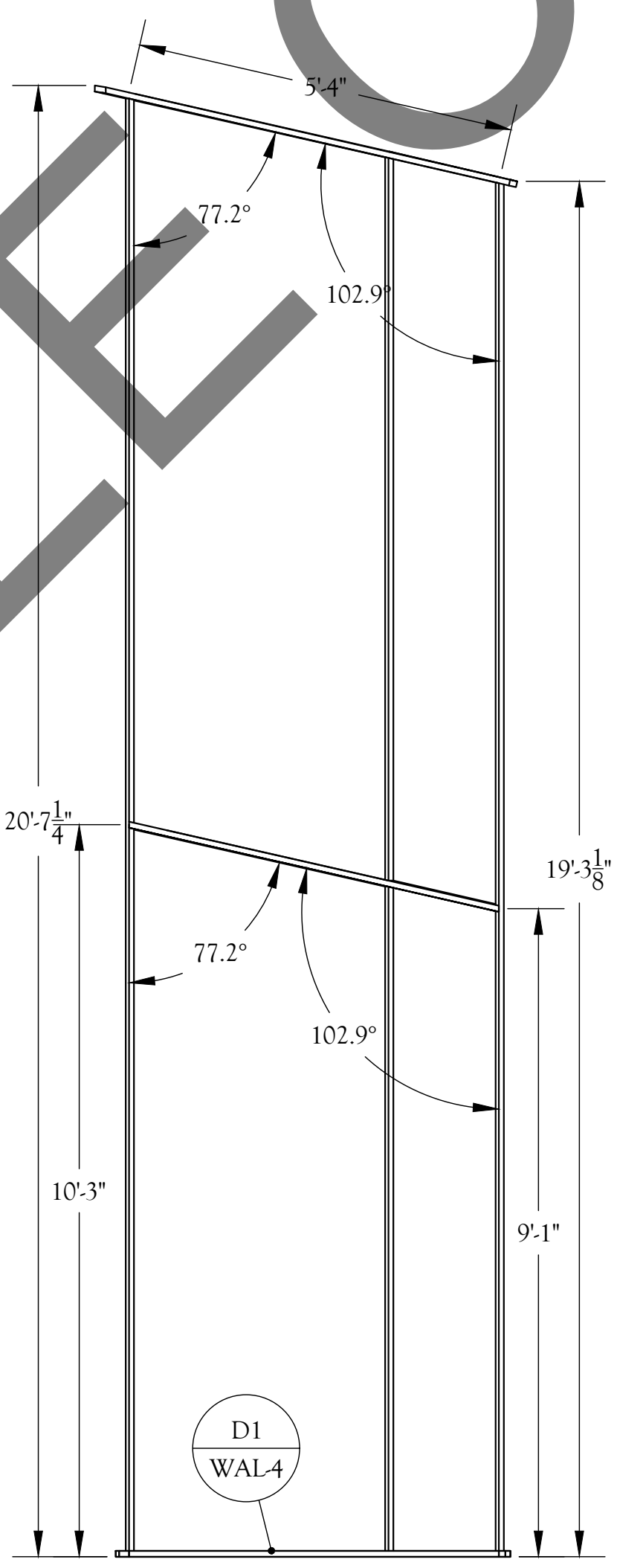
FR1 Slat Wall Brace
1/2" = 1'0" Build 2 (1 R&R)



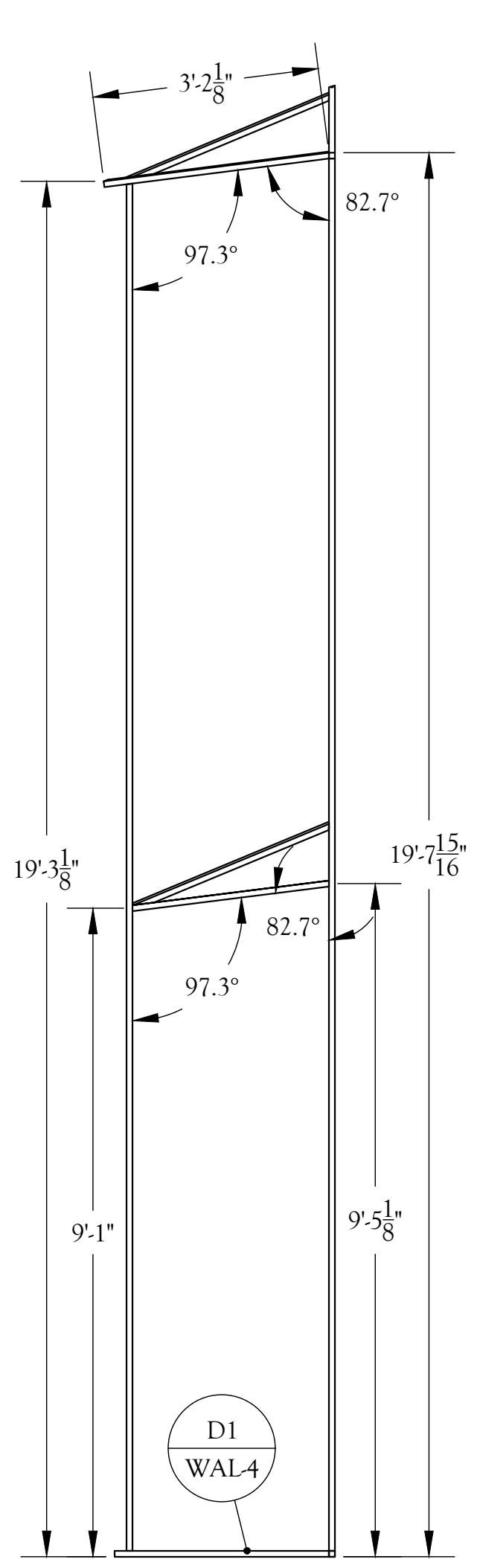
D1 Slat Wall Brace Base
1" = 1'0" Build 2



LEFT VIEW [#3]



FRONT VIEW [#3]



RIGHT VIEW [#3]

PLATE NOTES

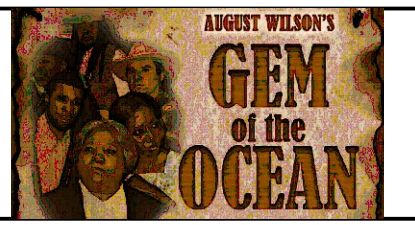
- 1) MATERIAL: 1x1x15GA mild steel
- 2) SIZE: 7/16" in diameter
- 3) Views are flat on side not a true projection. See top view.
- 4) Holes to be drilled once assembled.
- 5) Brace will be modified on SL side for SL door swing.

GENERAL NOTES

- Weld all around and grind face welds
- Angles cut to fit as needed
- Dimensions only show dimensions of one sides pieces.
- Base is a good starting point.

SUBMITTALS

#	DESCRIPTION	DATE
1	Initial Draftings	06/11/2019
2	Shop Drawings	07/14/2019
3		
4		
5		



Gem of the Ocean

Illinois Theatre

Colwell Playhouse

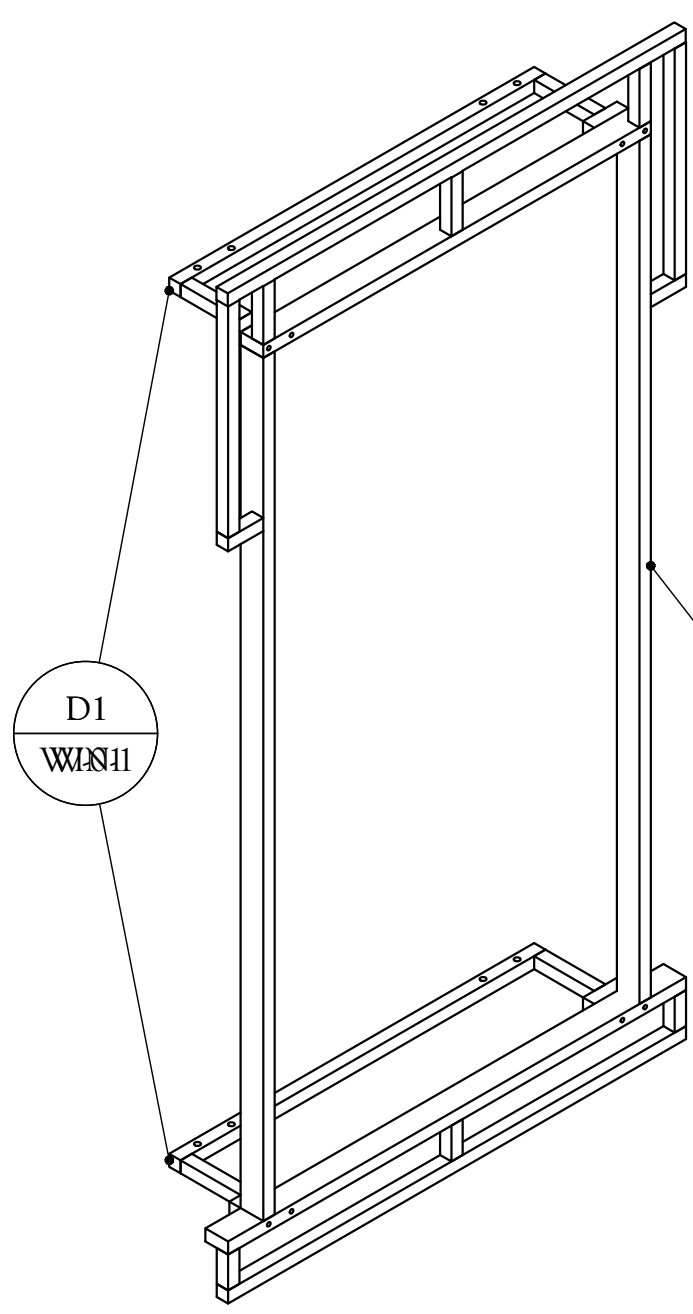
Scenic Designer
Linda Buchanan
Technical Director
Naomie S. Winch
Assistant Technical Director
Patrick Storey
Master Carpenter

Slat Wall Brace

SCALE 1/2" = 1'0" DRAWN BY NSMW

BUILT/SIGNED OFF BY

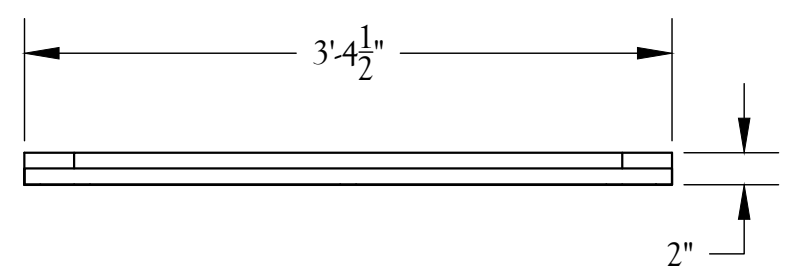
WALL BRACE
WAL-4



M1 Window Frame Composite
1" = 1'0" Build 3

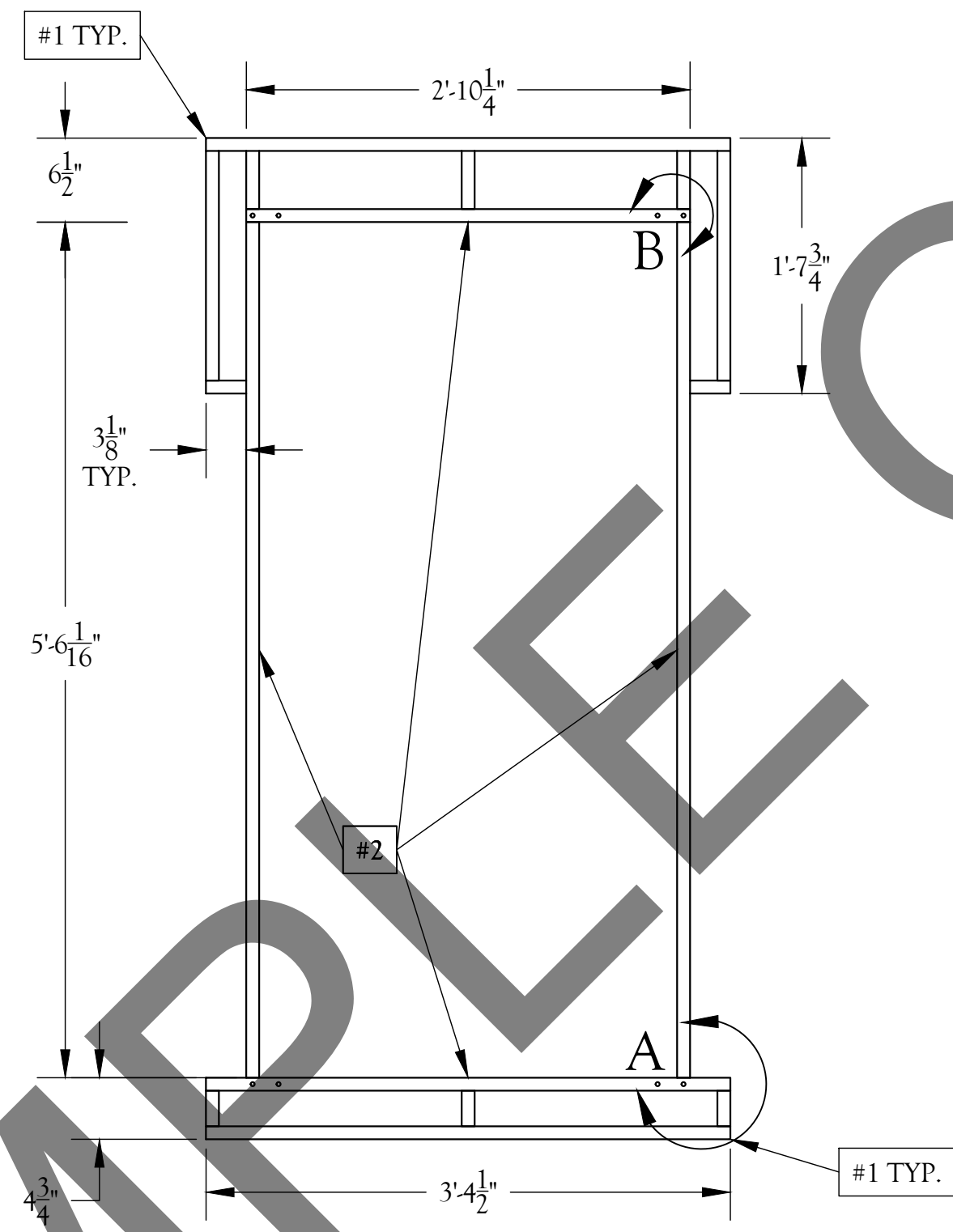
FR1 W-01

D1 W-01

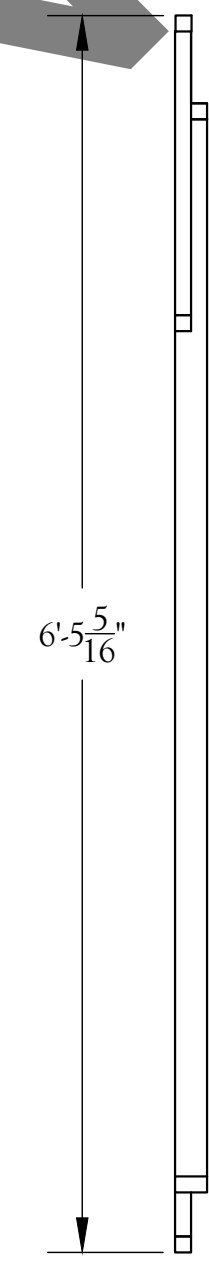


TOP VIEW

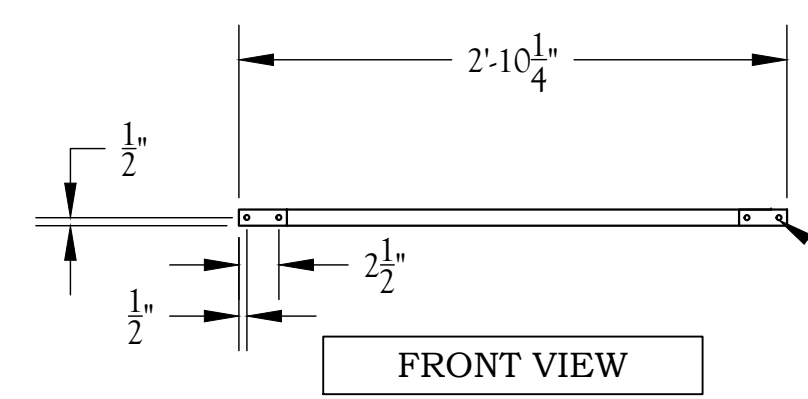
FR1 Window Frame
1" = 1'0"



FRONT VIEW

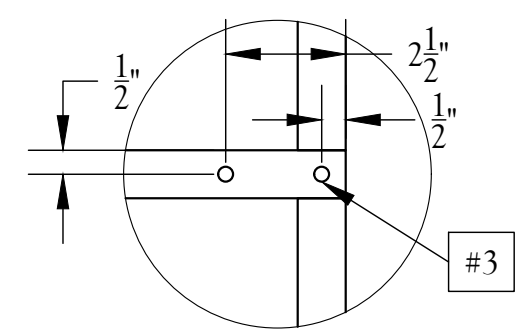


RIGHT VIEW

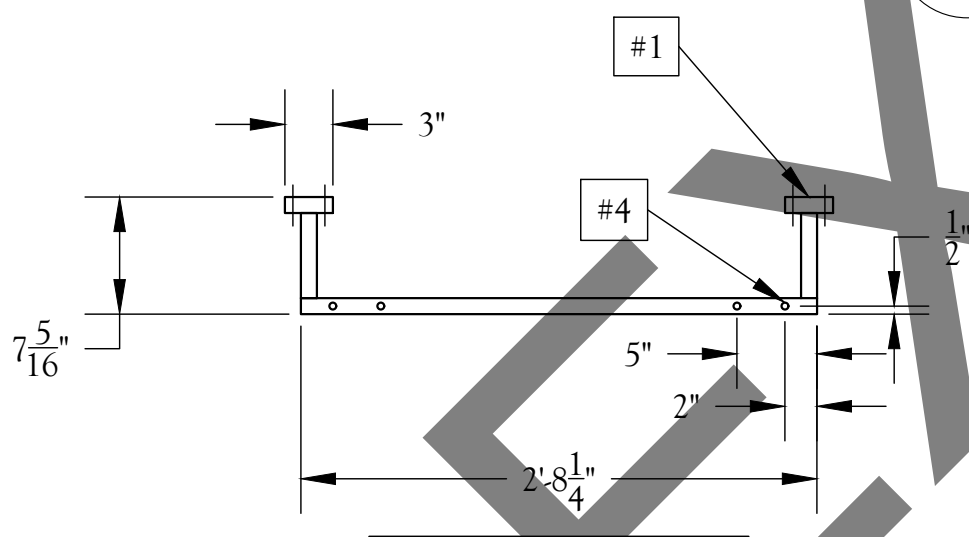


FRONT VIEW

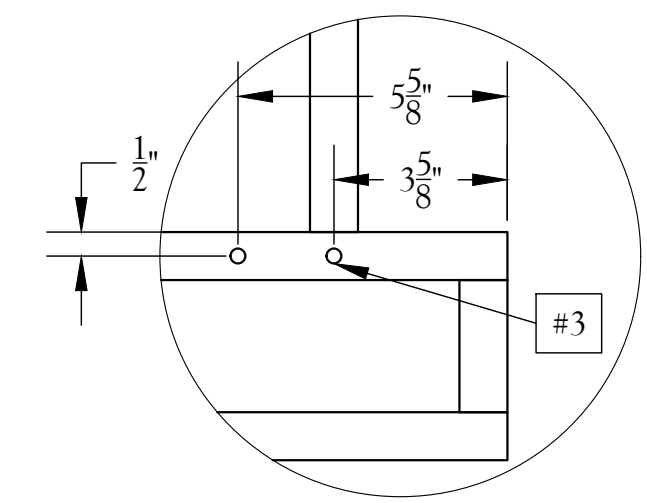
D1 Window Hanging Bracket
1" = 1'0" Build 6



DETAIL B
SCALE 3" = 1'0"



TOP VIEW



DETAIL A
SCALE 3" = 1'0"

PLATE NOTES

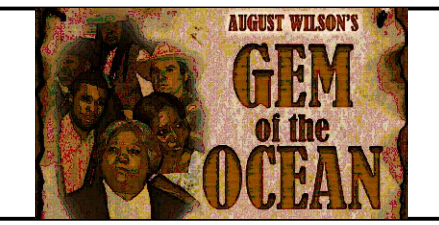
- 1) MATERIAL: 1x1x15GA Mild Steel
- 2) MATERIAL: 1x2x16GA Mild Steel
- 3) SIZE: 5/16" in diameter
- 4) SIZE: 7/16" in diameter

GENERAL NOTES

- Detail A & B are mirrored on the other side of piece.
- Window bracket holes are symmetrical.
- Weld all around and grind face welds.

SUBMITTALS

#	DESCRIPTION	DATE
1	Initial Drafting	05/28/2019
2	Shop Drawings	07/14/2019
3		
4		
5		



Gem of the Ocean

Illinois Theatre

Colwell Playhouse

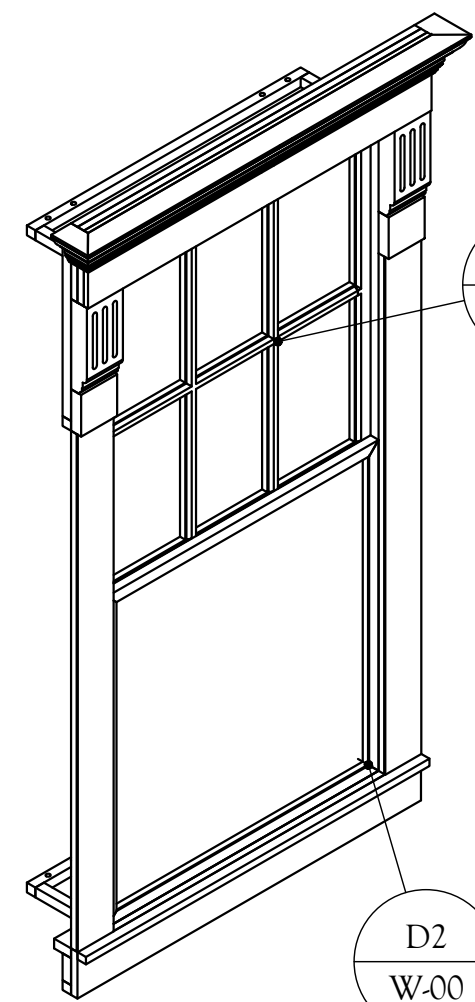
Scenic Designer
Linda Buchanan
Technical Director
Naomie S. Winch
Assistant Technical Director
Patrick Storey
Master Carpenter

Window Frame

SCALE 1" = 1'0" DRAWN BY NSMW

BUILT/SIGNED OFF BY

WINDOWS
W-01



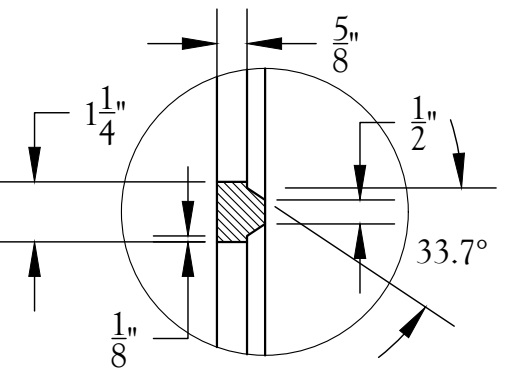
ISOMETRIC VIEW

D1
W-00

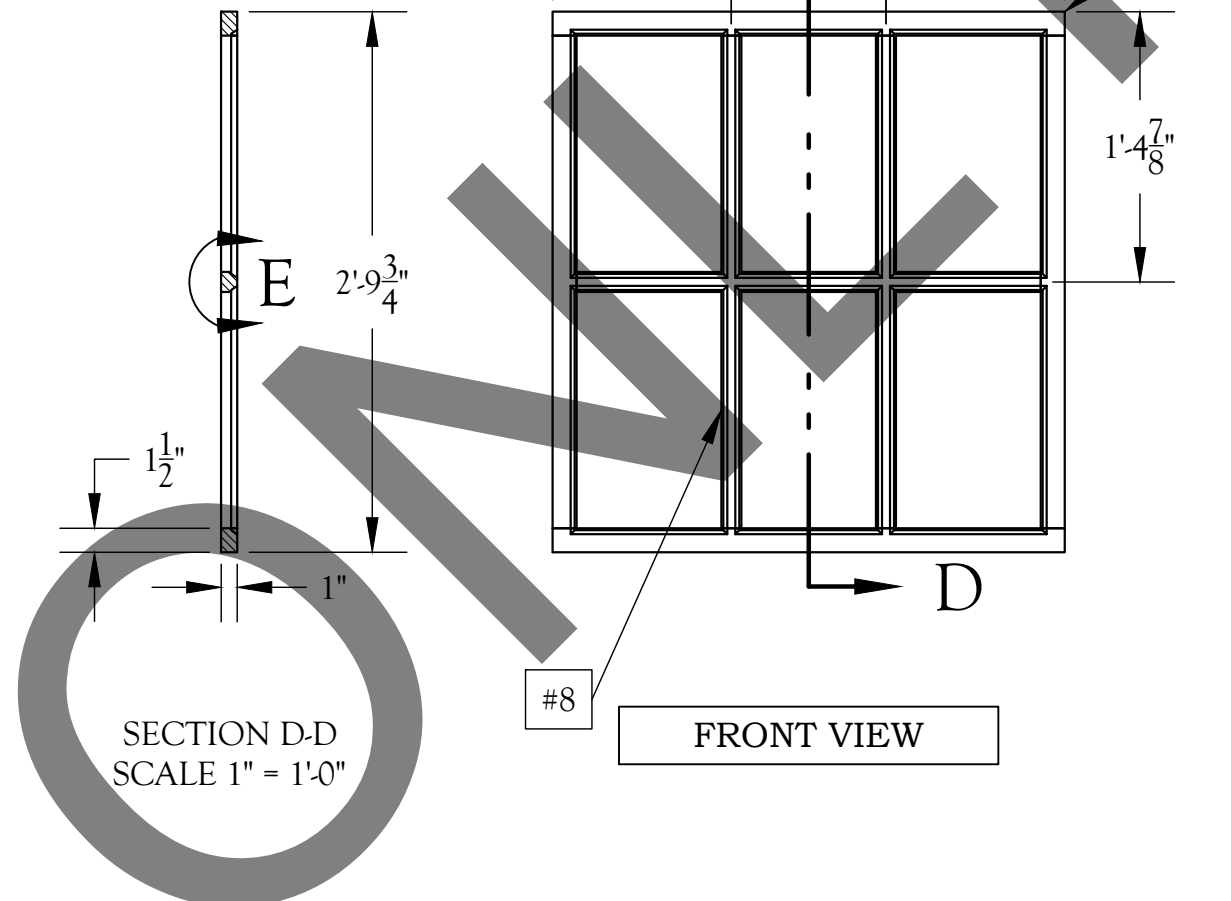
M1
Window Composite
3/4" = 1'0" Build 3

D2
W-00

D1
Top Window Sash
1" = 1'0" Build 3

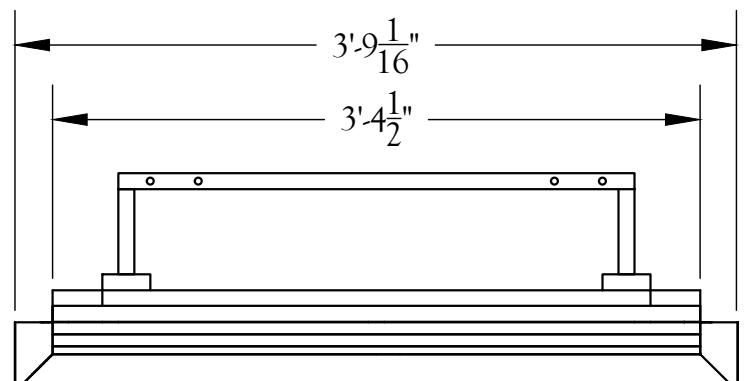


DETAIL E
SCALE 3" = 1'0"



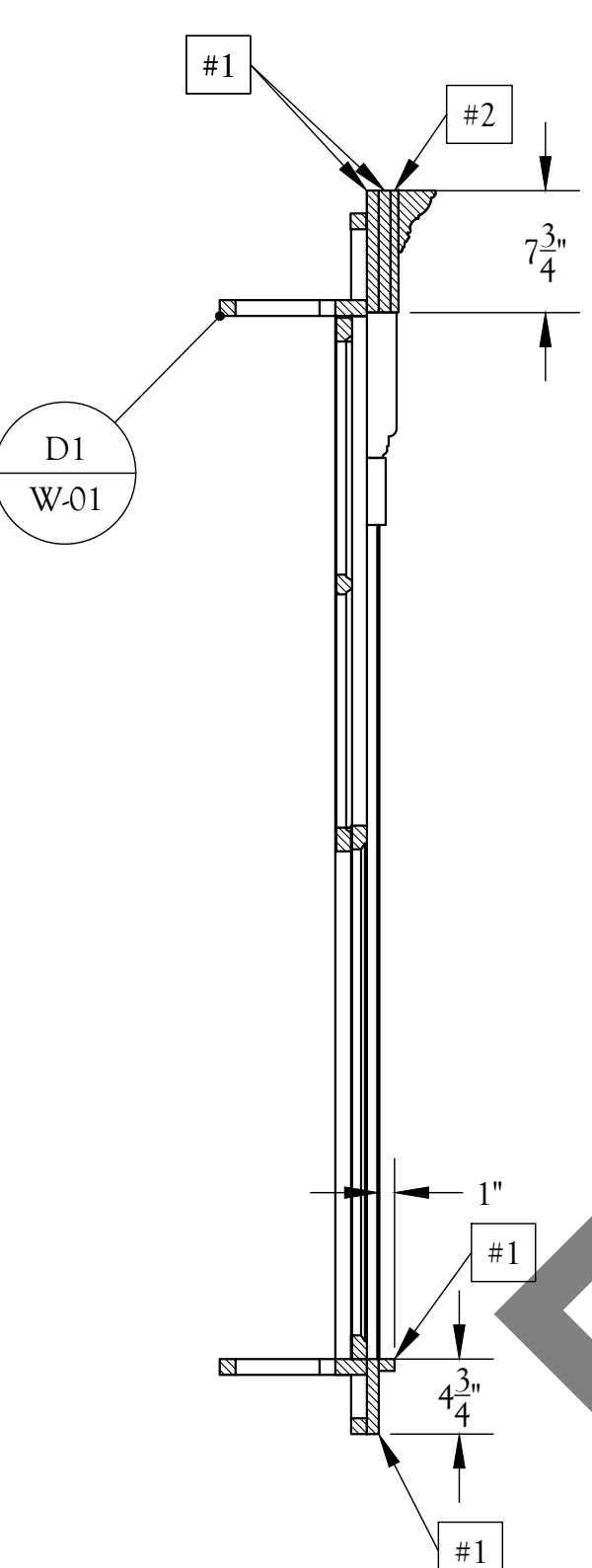
SECTION D-D
SCALE 1" = 1'0"

FRONT VIEW

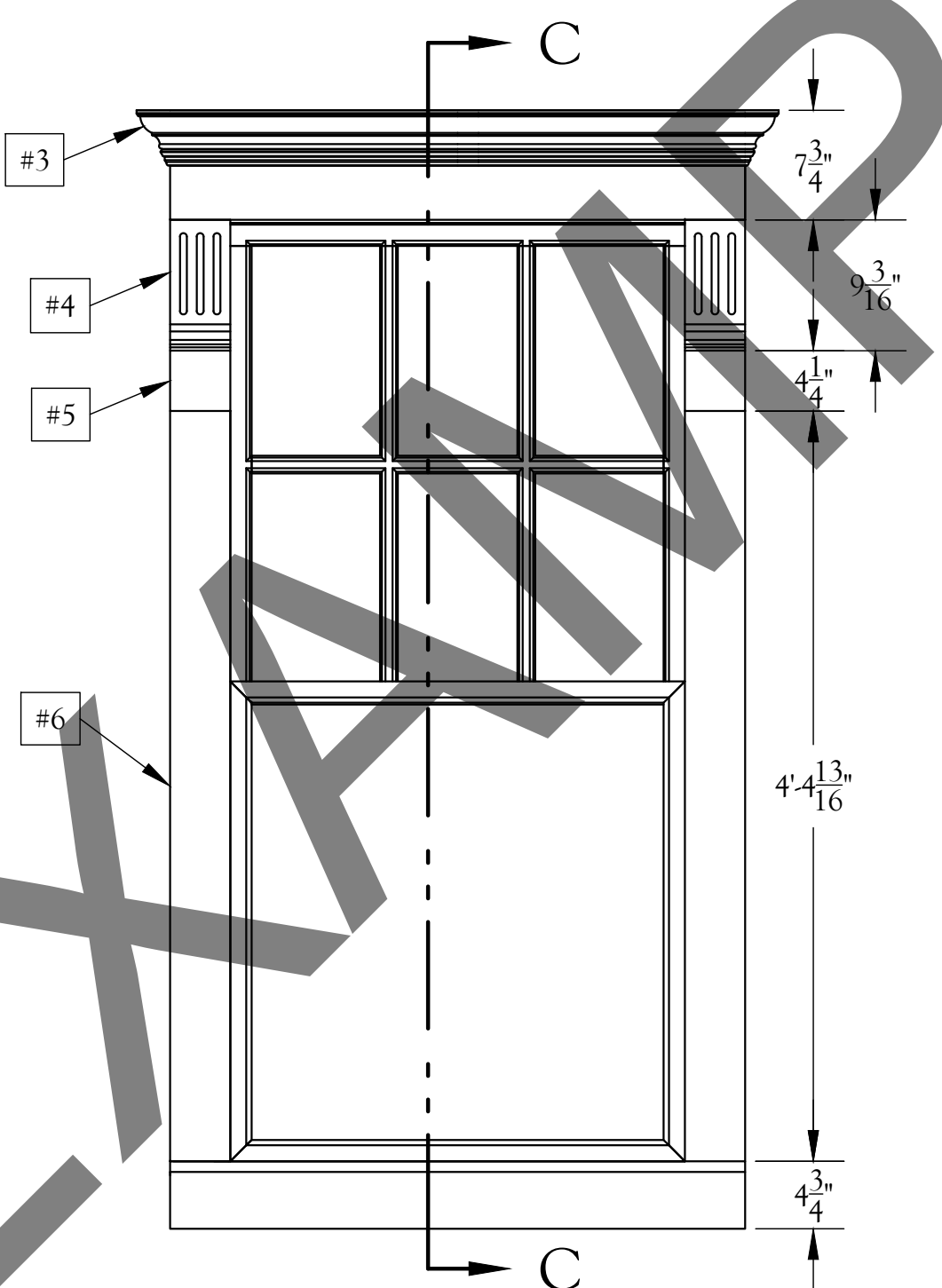


TOP VIEW

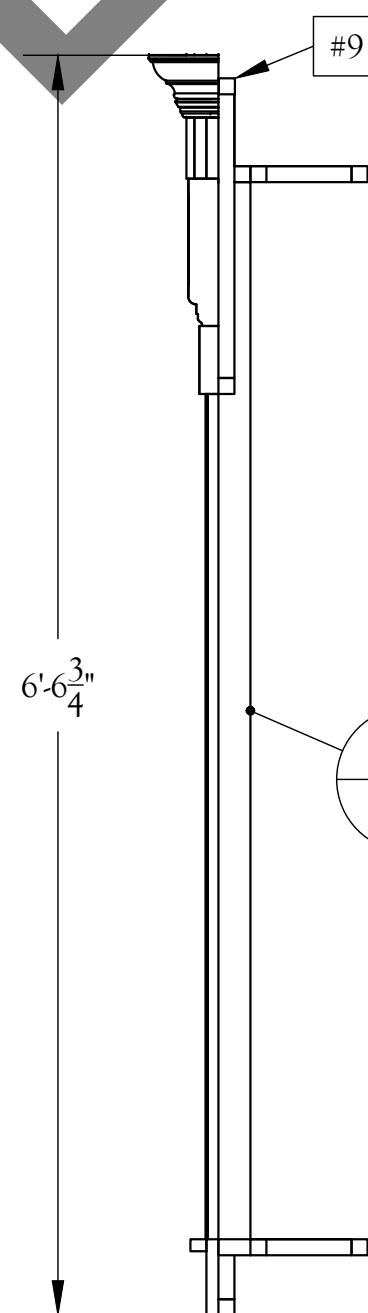
MO1
Window Moulding
1" = 1'0"



SECTION C-C
SCALE 1" = 1'0"

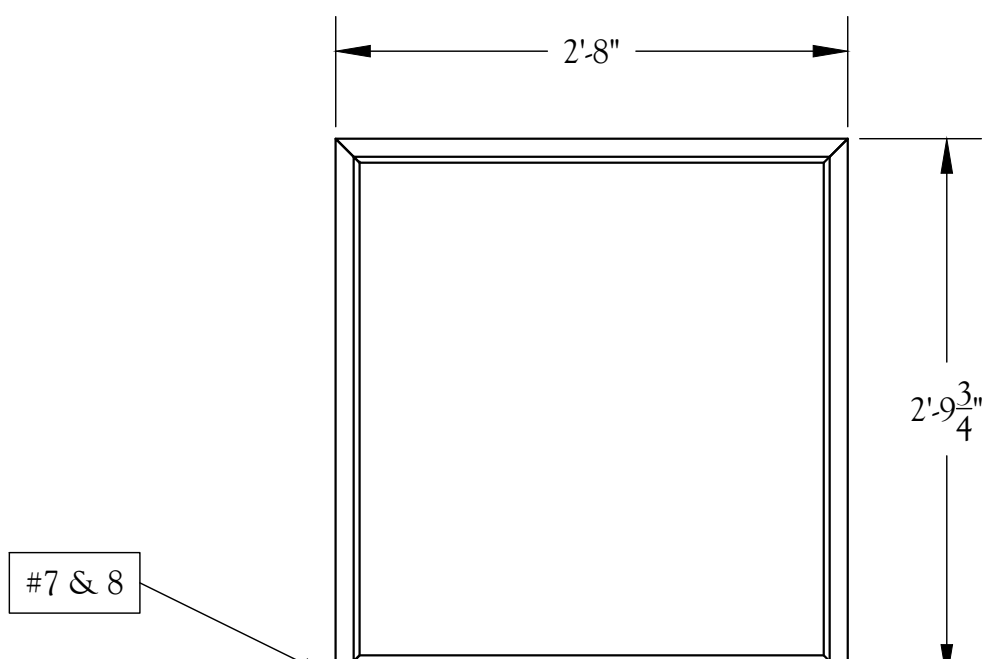


FRONT VIEW



RIGHT VIEW

FR1
W-01



FRONT VIEW

D2
Bottom Window Sash
1" = 1'0" Build 3

PLATE NOTES

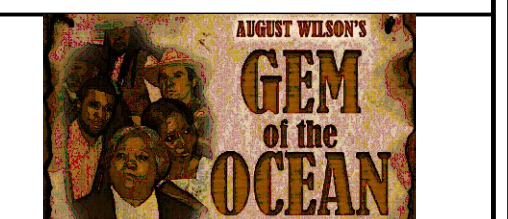
- 1) MATERIAL: 3/4" MDF
- 2) MATERIAL: 1/2" MDF
- 3) MATERIAL: Typical Crown Moulding - Home Depot SKU #956220
- 4) MATERIAL: Typical Custom Carved Corbel (see MO-01 for details)
- 5) MATERIAL: Typical Rosettes - Home Depot SKU #960378
- 6) MATERIAL: Typical Custom Translucent Casing (see MO-01 for details)
- 7) MATERIAL: 2x2 (nominal) Red Cedar ripped to 1" x 1.5" for sash (actual) and ripped to 1" x 1.25" for muttons/mullions (actual).
- 8) Upholstery staple black tulle with muslin finished edges to the back side of window sashes.
- 9) Steel underhangs top casing and crown moulding on purpose.

GENERAL NOTES

- Window sashes to affix to steel frame with countersunk screws. Non-functional.
- Glue and toe screw sashes together on the back. Do not use typical framing joints.
- See TD for router bit to be used.

SUBMITTALS

#	DESCRIPTION	DATE
1	Initial Drafting	05/28/2019
2	Shop Drawings	07/14/2019
3	Updated w/ Assembly	07/18/2019
4		
5		



Gem of the Ocean

Illinois Theatre

Colwell Playhouse

Scenic Designer
Linda Buchanan
Technical Director
Naomie S. Winch
Assistant Technical Director
Patrick Storey
Master Carpenter

Window Composite & Sash

SCALE 1" = 1'0" DRAWN BY NSMW

BUILT/SIGNED OFF BY

WINDOWS
W-00