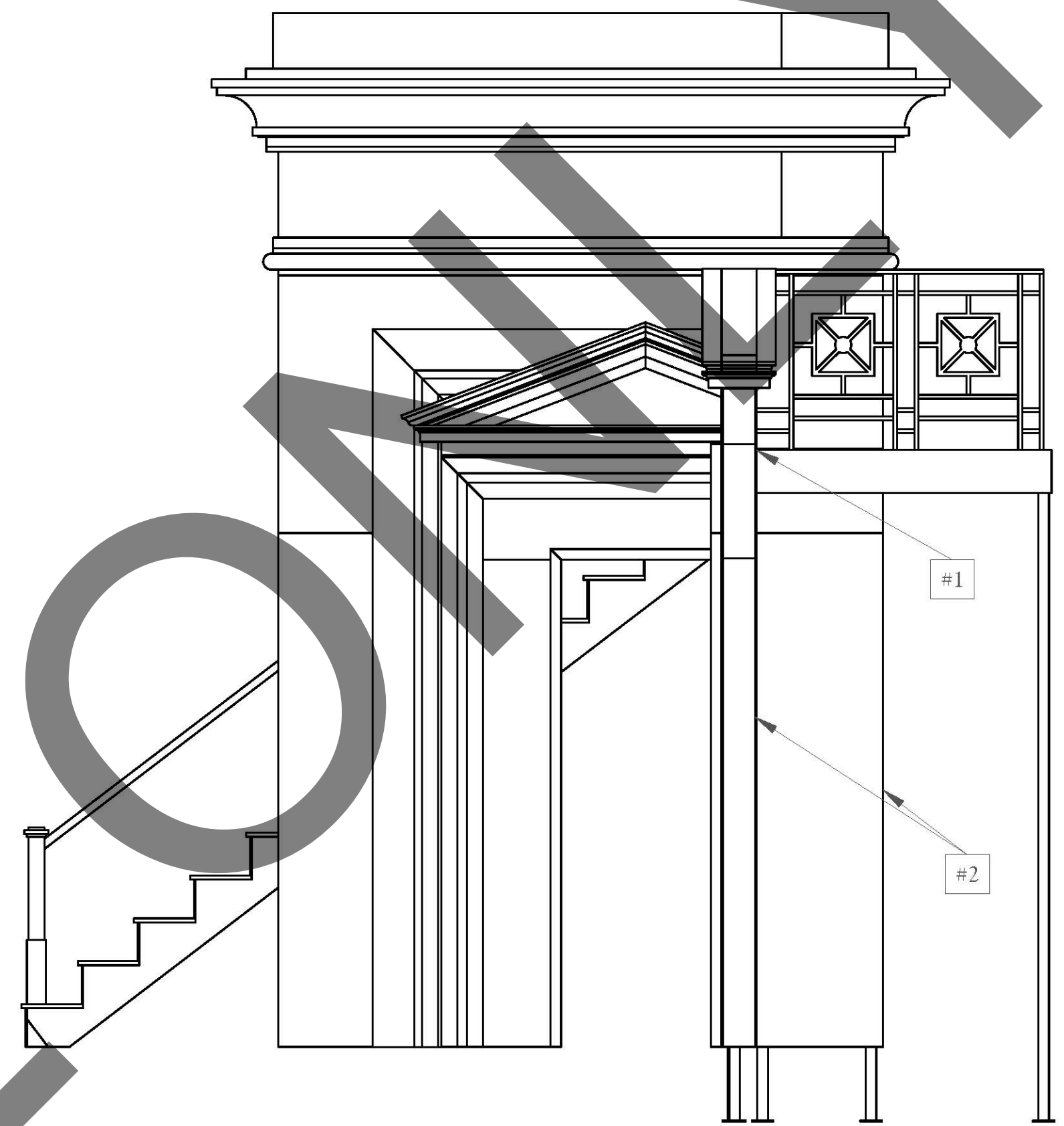
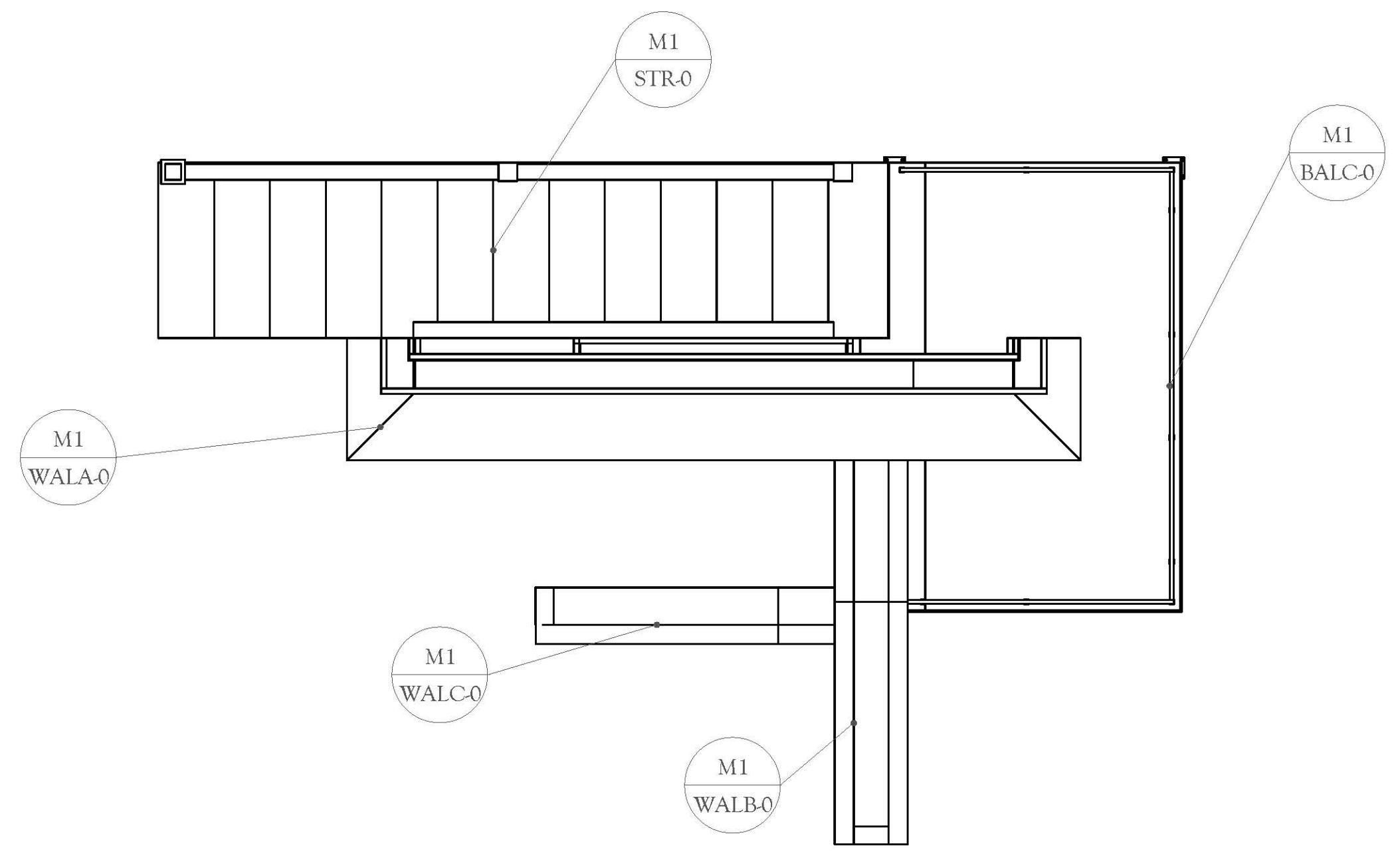


ISOMETRIC VIEW



FRONT VIEW



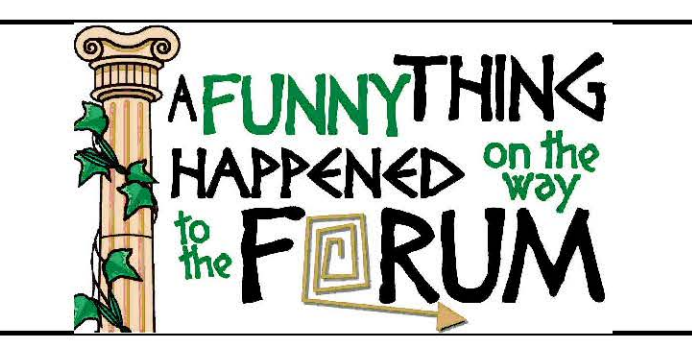
TOP VIEW

- PLATE NOTES**
- 1) DS leg of the balcony is built into WALB and will need to bolt into the 1.5" SCH40 pipe at load-in.
  - 2) WALA & WALB bolt together with  $\frac{3}{8}$ " bolts from US of WALA.
  - 3) WALB & WALC bolt together with  $\frac{3}{8}$ " bolts through WALB into WALC.

- GENERAL NOTES**
- 1) All CNC'ed pieces are marked by a RED annotation.
  - 2) All framing is steel.
  - 3) All facing is  $\frac{1}{4}$ " masonite, with a few exceptions.

**SUBMITTALS**

#	DESCRIPTION	DATE
1	Initial Build Drawings	08/27/2018
2		
3		
4		
5		



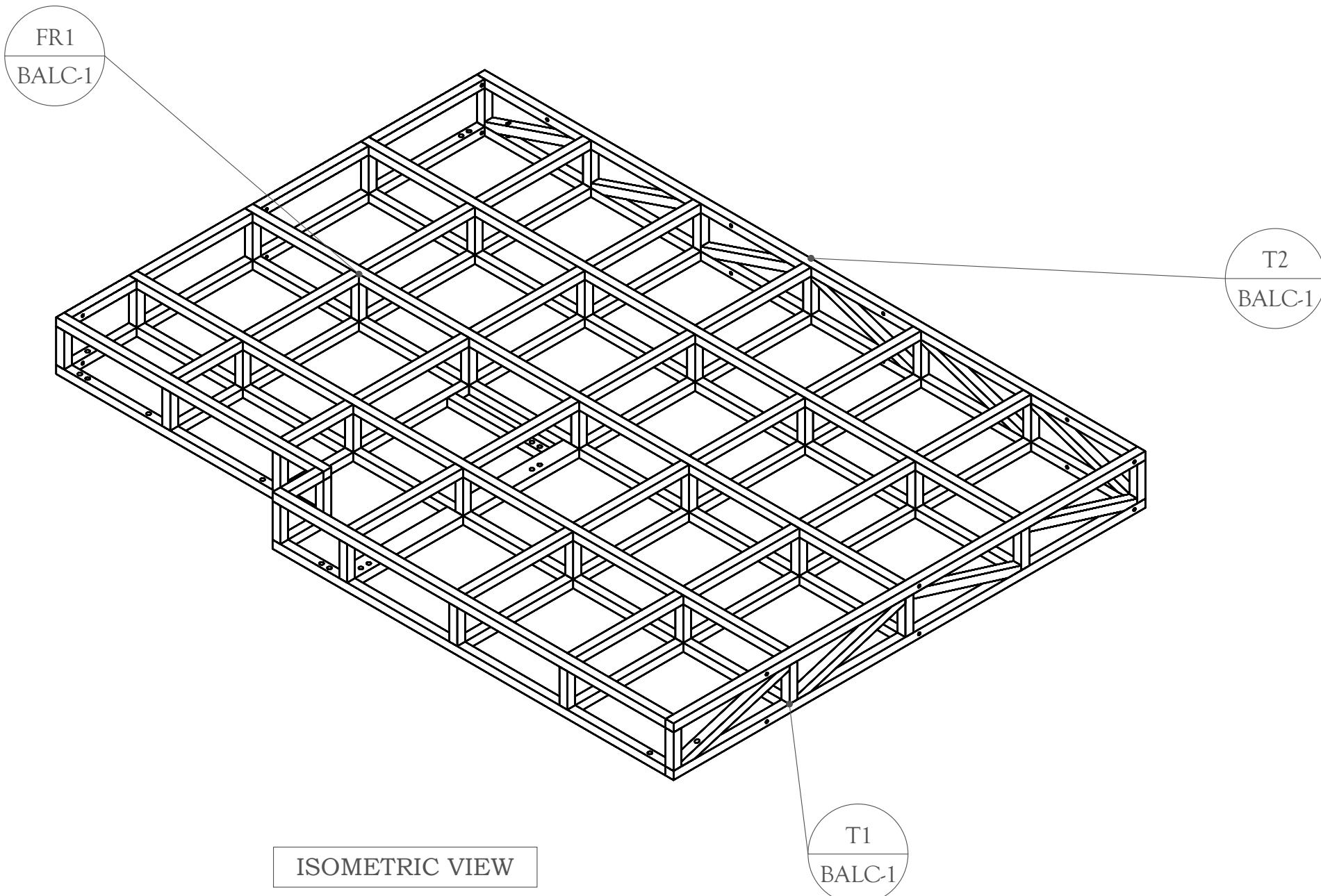
A FUNNY... FORUM  
ILLINOIS THEATRE  
COLWELL PLAYHOUSE

Director J.W. Morriette	Technical Director Bobby Reynolds
Scenic Designer Regina Garcia/Vil Song	Assistant Technical Director Naomie S. Winch
Stage Manager Kayla Uribe	Master Carpenter Ryan Gajdos

**UNIT A COMPOSITE**

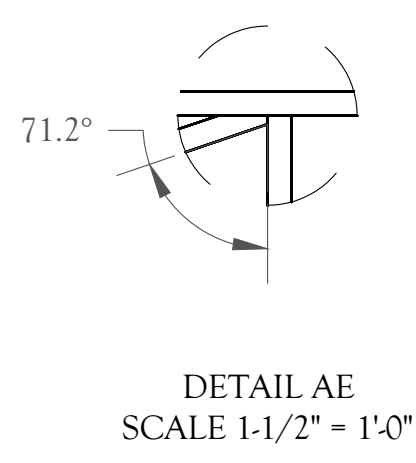
SCALE NOTED = 1"0"	DRAWN BY NSMW
<b>UNIT A MAIN-0</b>	BUILT BY



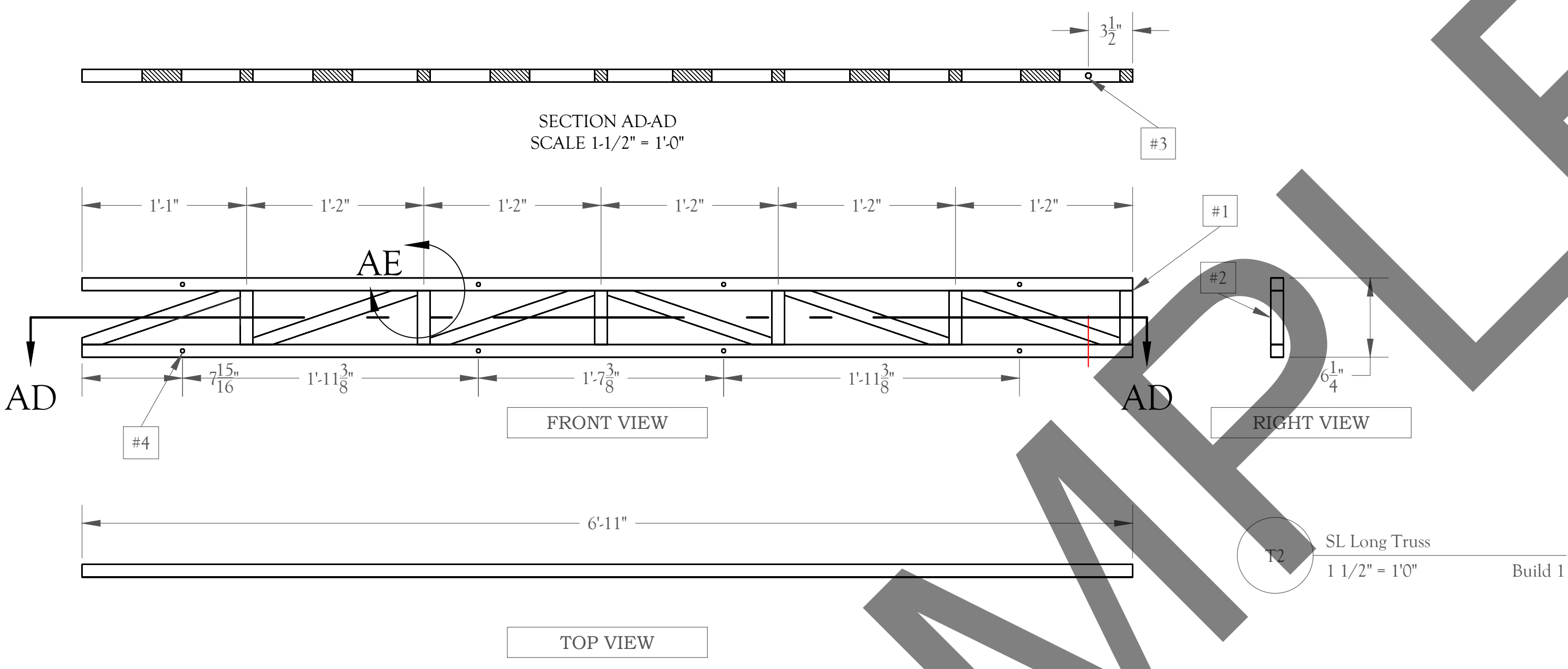


ISOMETRIC VIEW

M1 WALL C Frame  
1" = 1'0" Build 1



DETAIL AE  
SCALE 1-1/2" = 1'-0"



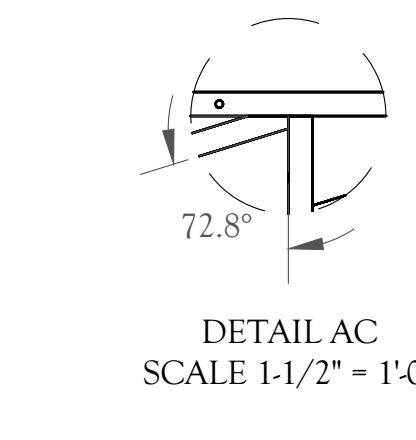
SECTION AD-AD  
SCALE 1-1/2" = 1'-0"

FRONT VIEW

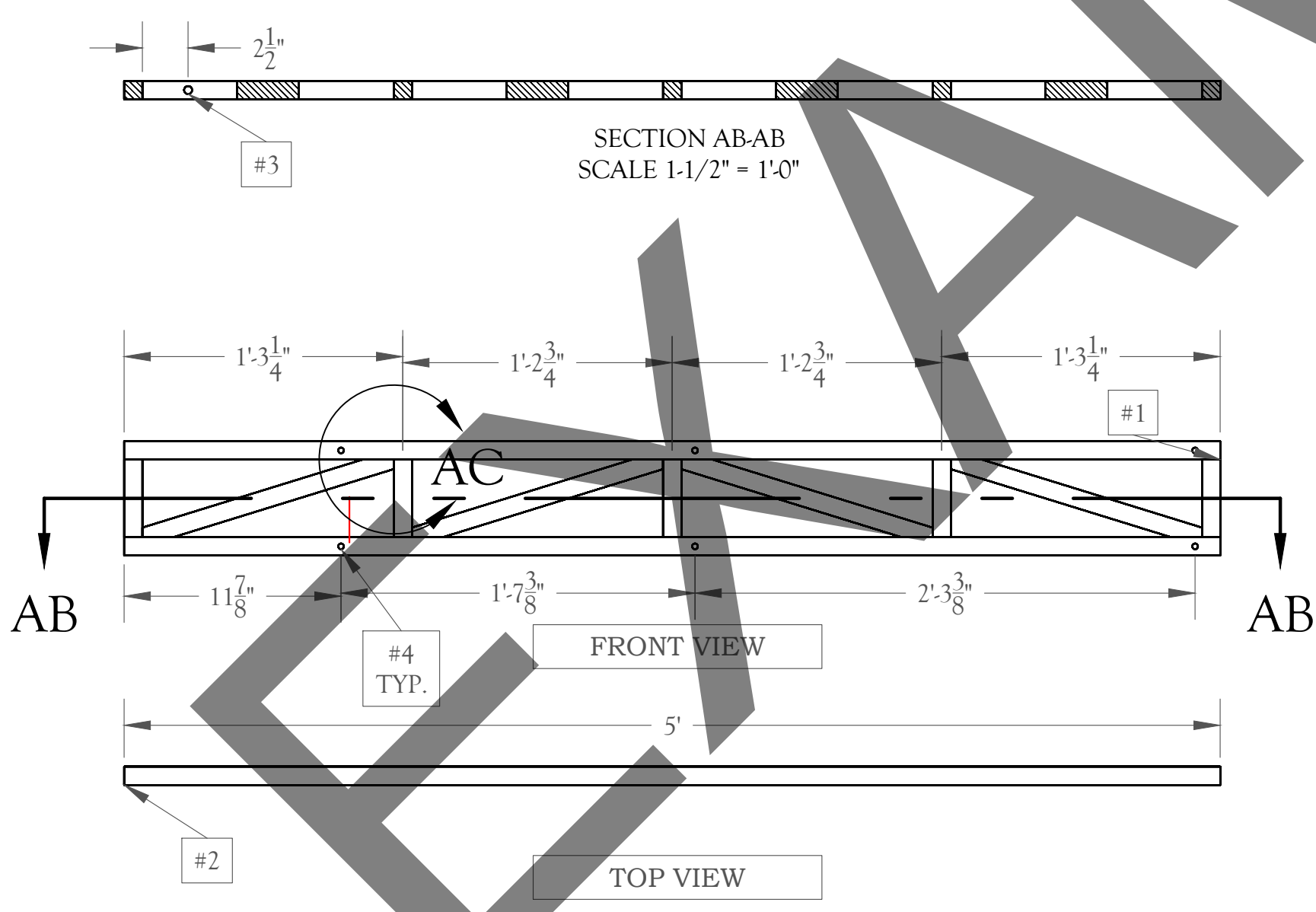
RIGHT VIEW

TOP VIEW

T2 SL Long Truss  
1 1/2" = 1'0" Build 1



DETAIL AC  
SCALE 1-1/2" = 1'-0"



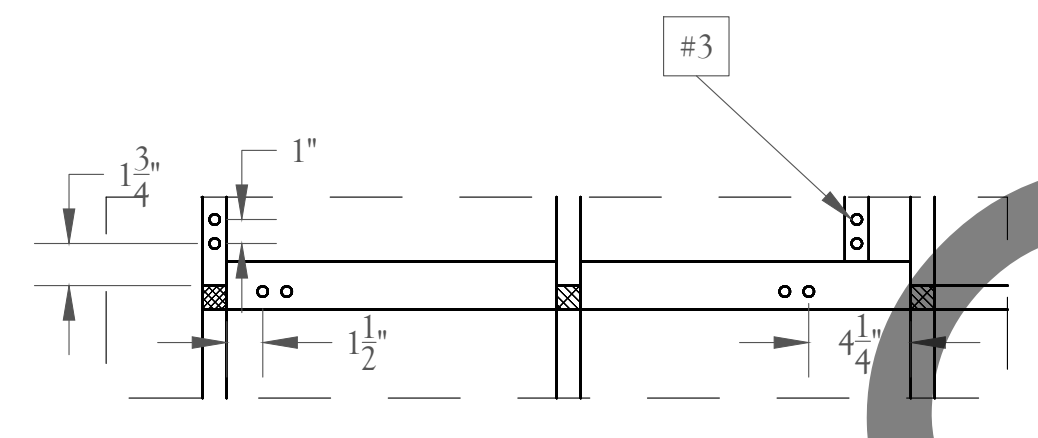
SECTION AB-AB  
SCALE 1-1/2" = 1'-0"

FRONT VIEW

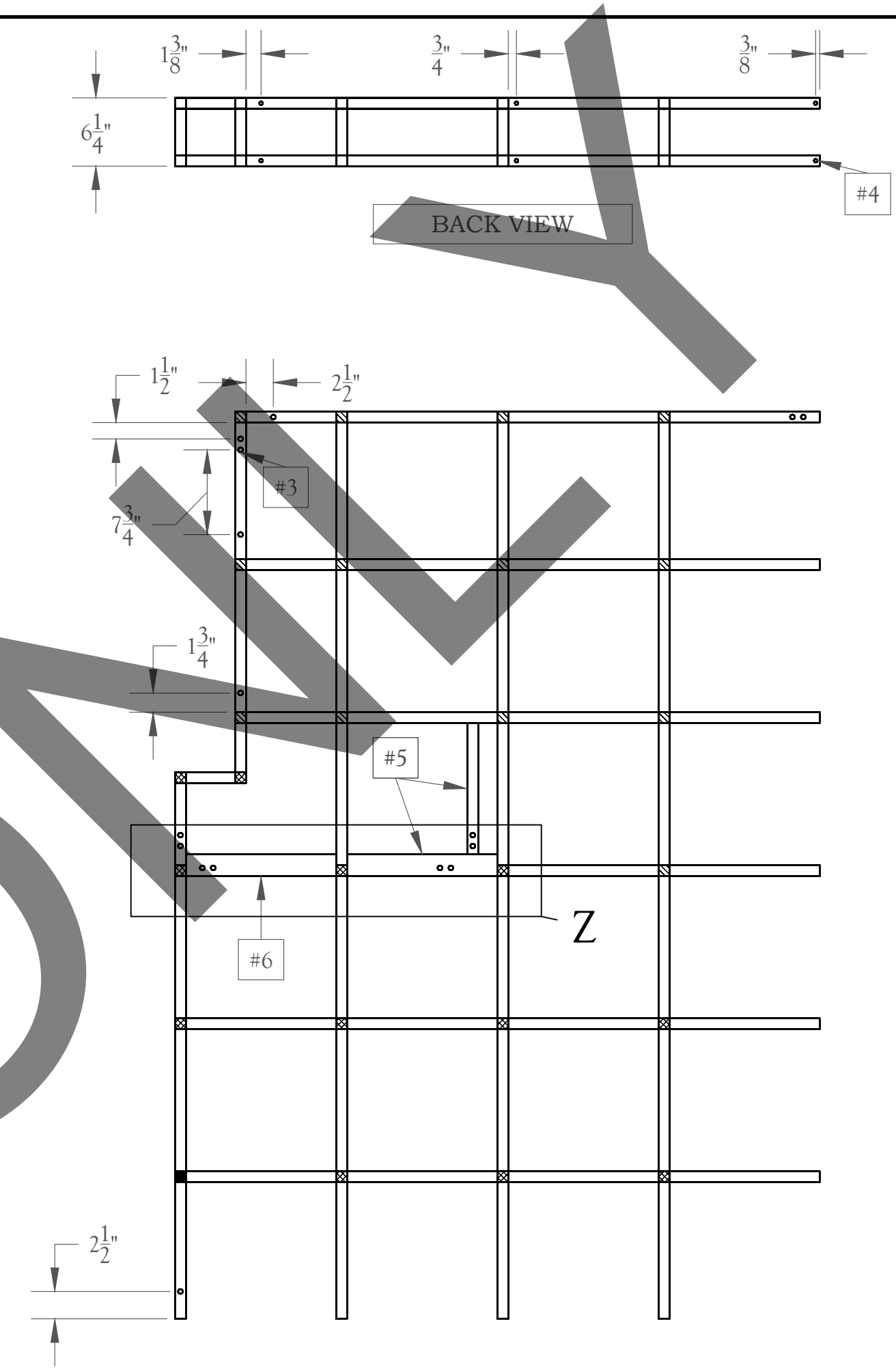
RIGHT VIEW

TOP VIEW

T1 DS Short Truss  
1 1/2" = 1'0" Build 1

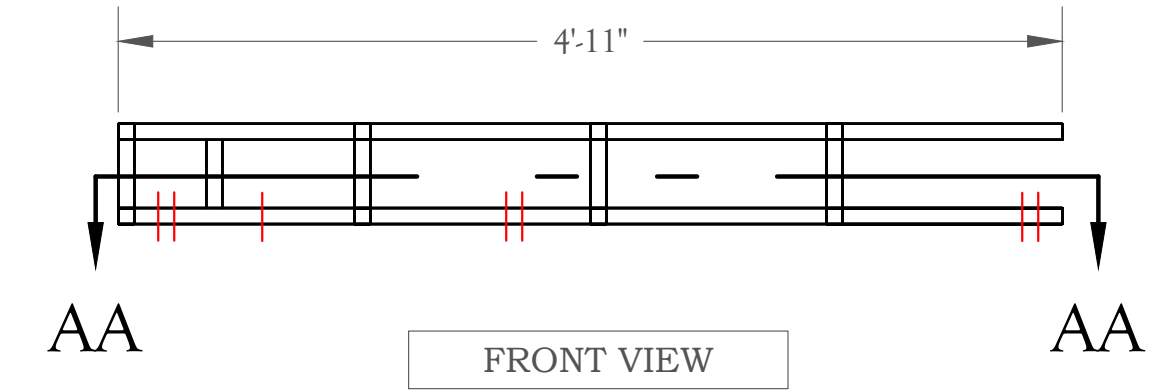


DETAIL Z  
SCALE 1-1/2" = 1'-0"

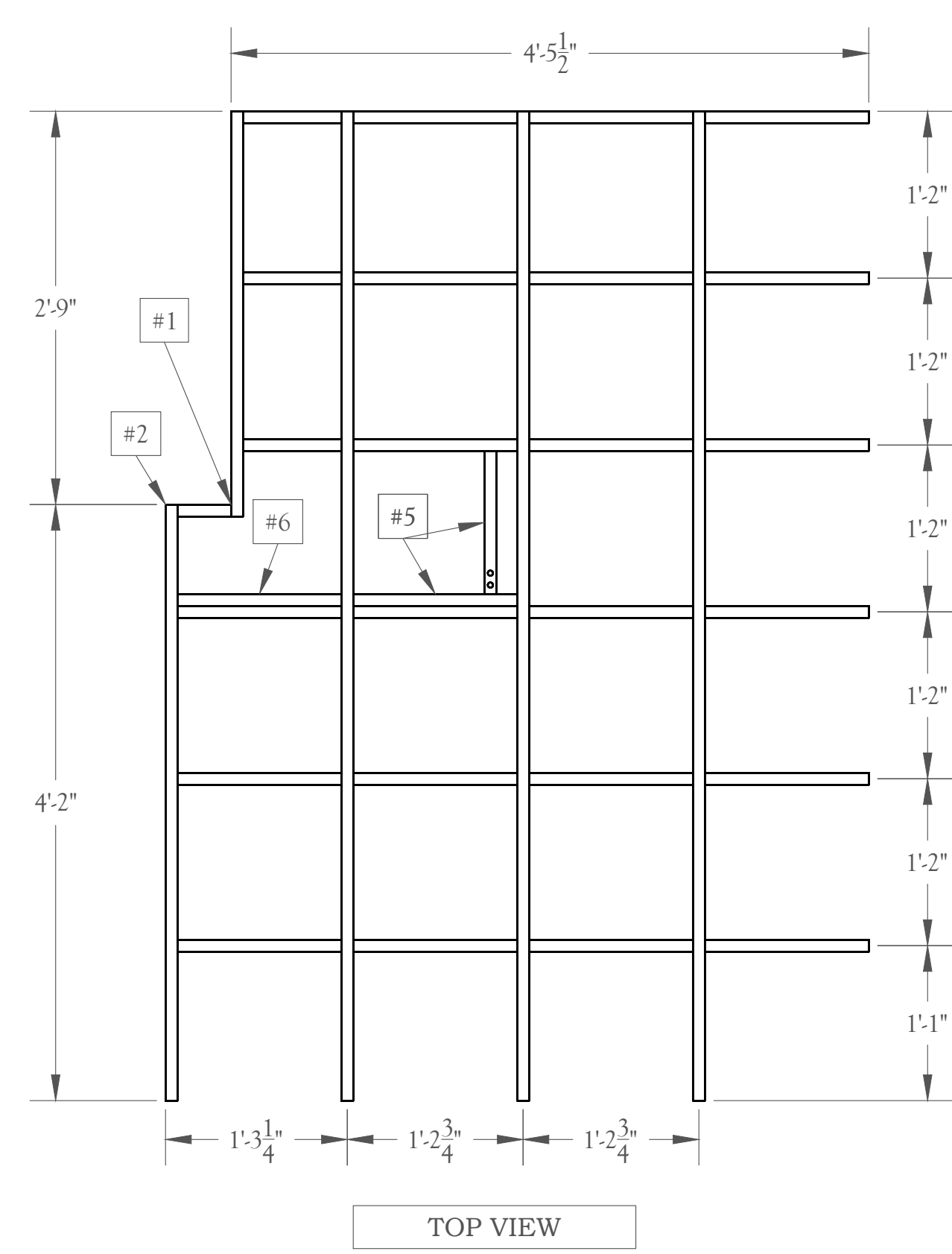


BACK VIEW

SECTION AA-AA  
SCALE 1" = 1'-0"



FRONT VIEW



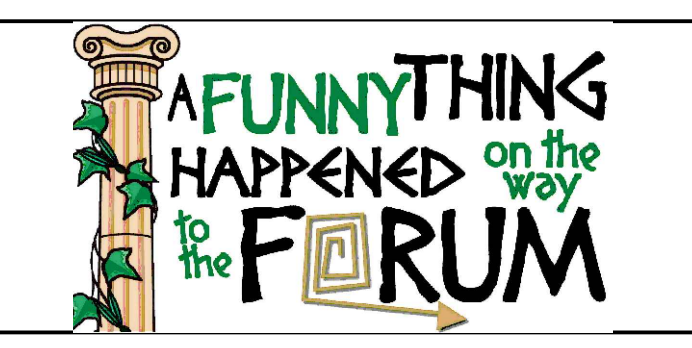
TOP VIEW

- PLATE NOTES**
- 1) Weld all around, grind face welds on top for smooth finish.
  - 2) MATERIAL: 1" x 1" 16GA Mechanical Box Tube
  - 3) SIZE: Holes are 1/16" in diameter. TYP.
  - 4) SIZE: Hole is 7/16" in diameter.
  - 5) These two pieces are only on the bottom frame.
  - 6) MATERIAL: 1" x 2" 16GA Mechanical Box Tube

- GENERAL NOTES**
- 1) RED lines indicate pieces with bolt connections shown in top view.
  - 2) All holes are 1/16" in diameter and will be attached with 3/8" size bolts.

**SUBMITTALS**

#	DESCRIPTION	DATE
1	Initial Build Drawings	08/27/2018
2		
3		
4		
5		



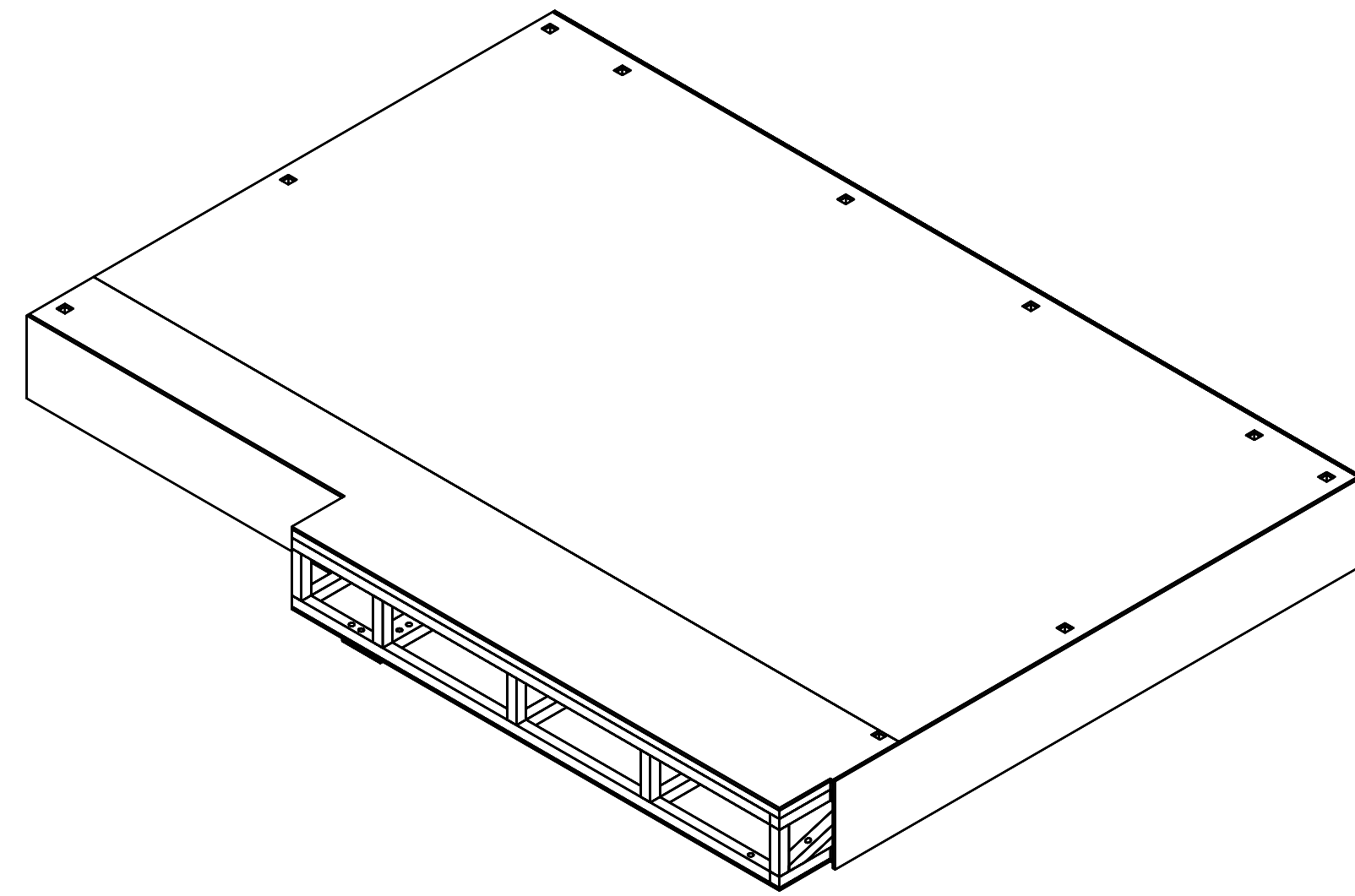
A FUNNY... FORUM  
ILLINOIS THEATRE  
COLWELL PLAYHOUSE

Director J.W. Morrisette	Technical Director Bobby Reynolds
Scenic Designer Regina Garcia/Vil Song	Assistant Technical Director Naomie S. Winch
Stage Manager Kayla Uribe	Master Carpenter Ryan Gadlos

**BALCONY FRAME**

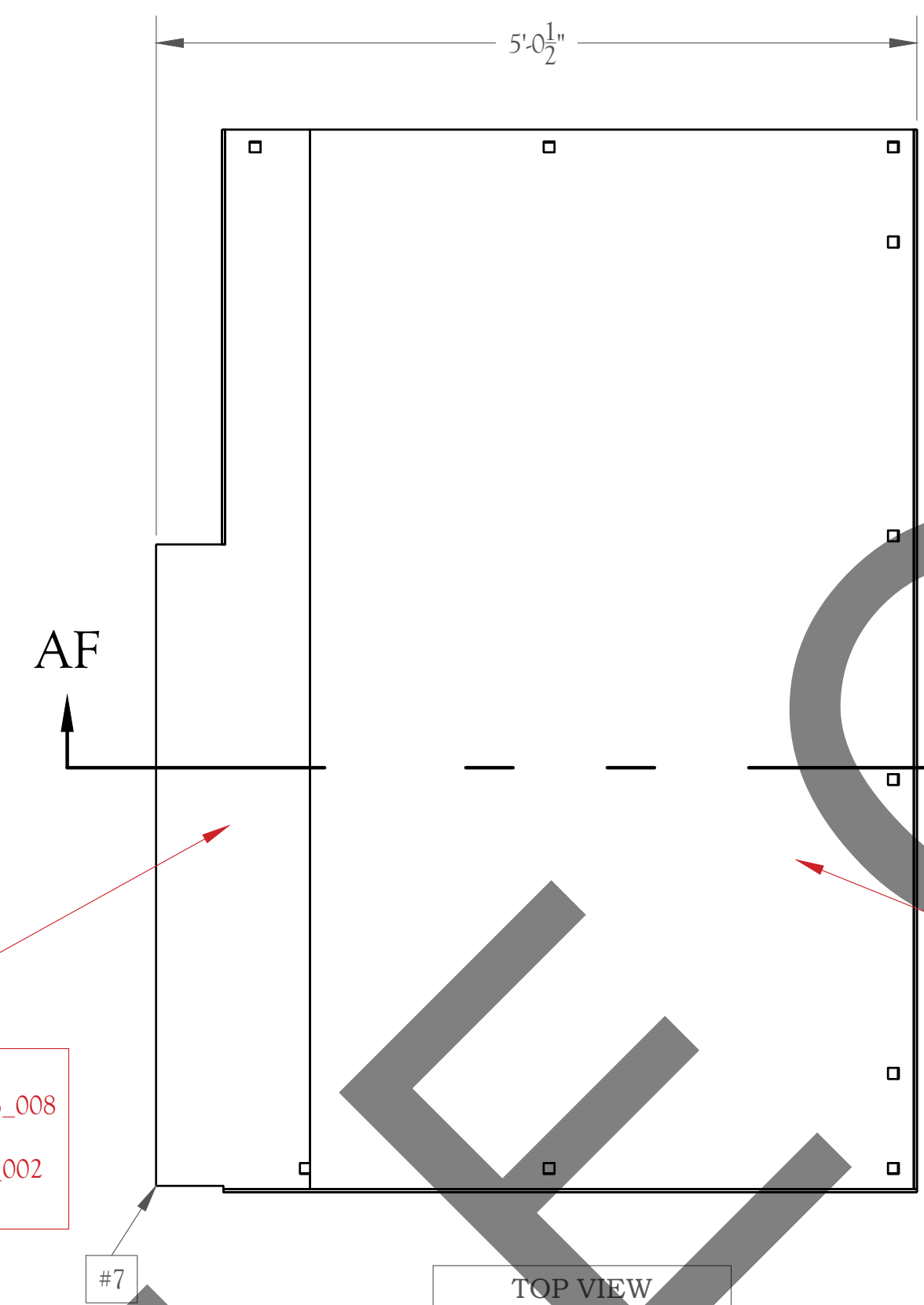
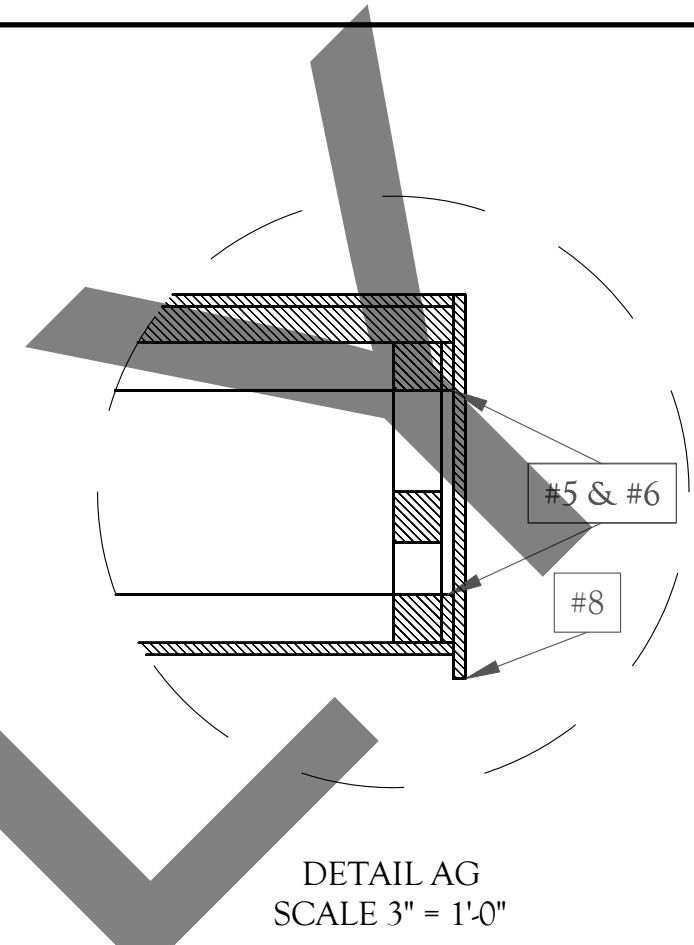
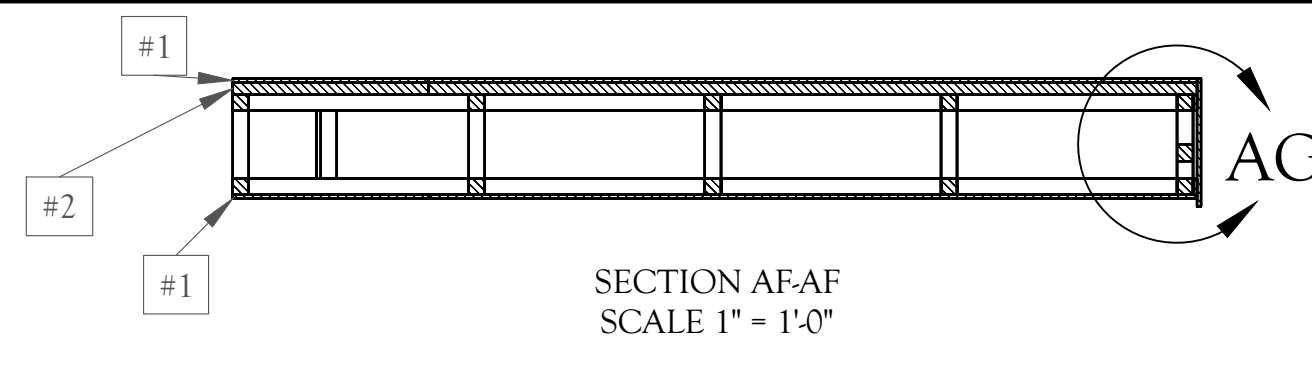
SCALE NOTED = 1'0"	DRAWN BY NSMW
	BUILT BY

**UNIT A  
BALC-1**



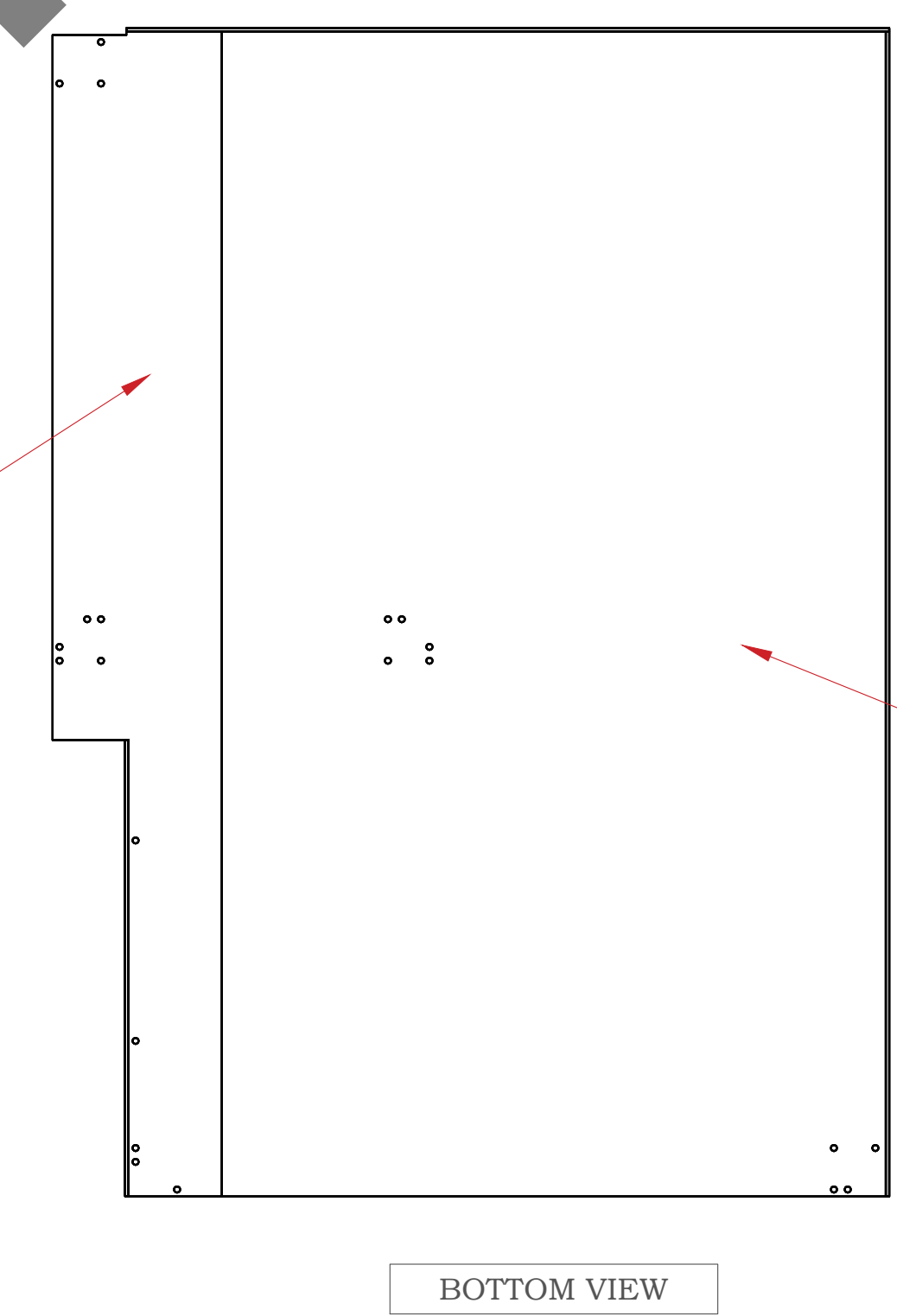
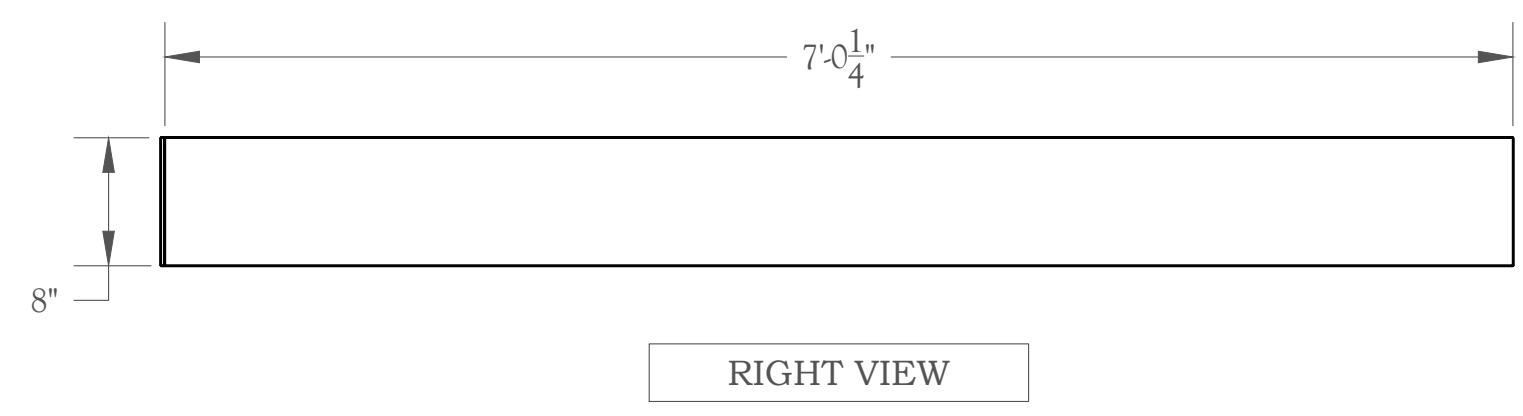
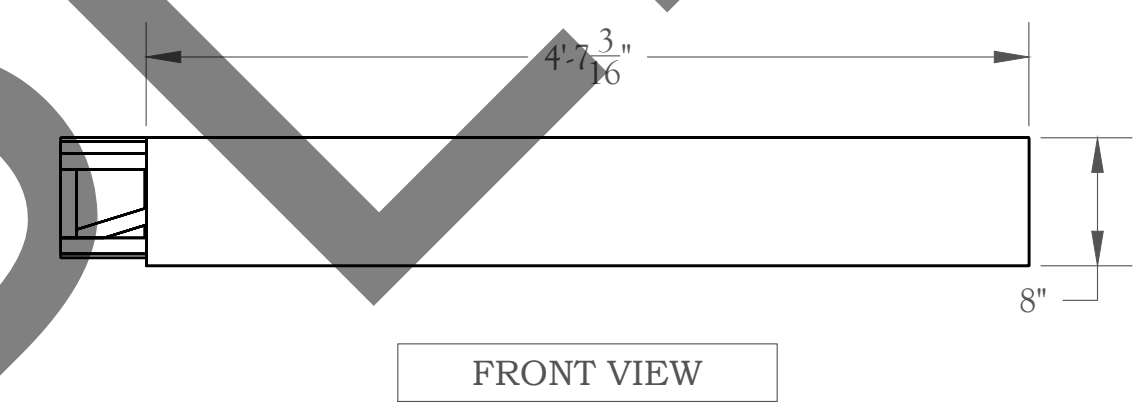
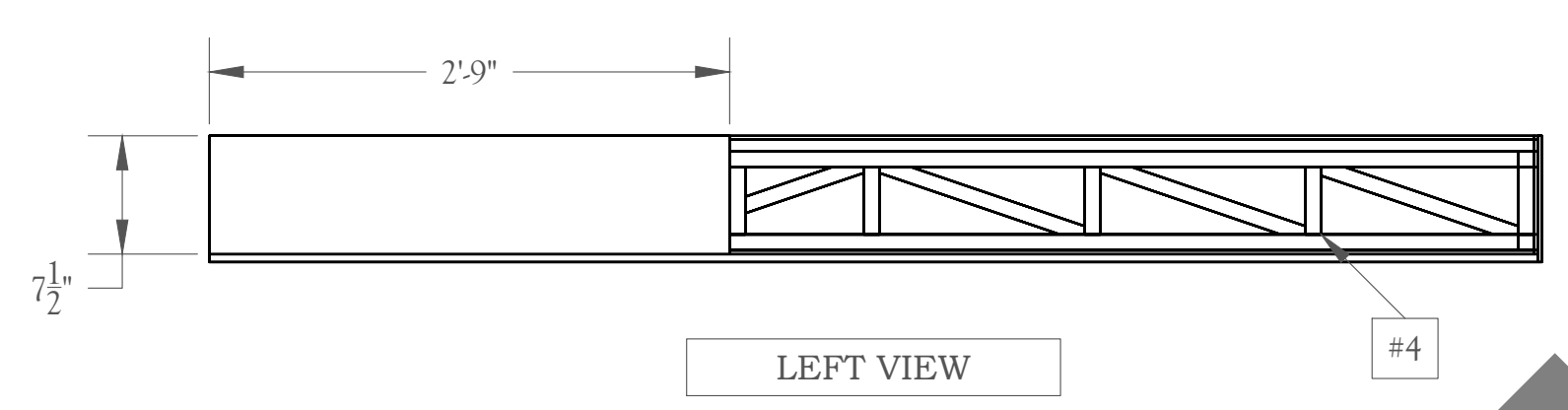
ISOMETRIC VIEW

M1 BALC C Skin  
1" = 1'0" Build 1



CNC'ed Piece  
File: FORUM-CPH-UNIT A-1.4Maso\_008  
&  
File: FORUM-CPH-UNIT A-3.4Ply\_002  
For plywood underlayment

CNC'ed Piece  
File: FORUM-CPH-UNIT A-1.4Maso\_003  
&  
File: FORUM-CPH-UNIT A-3.4Ply\_001  
For plywood underlayment



CNC'ed Piece  
File: FORUM-CPH-UNIT A-1.4Maso\_002

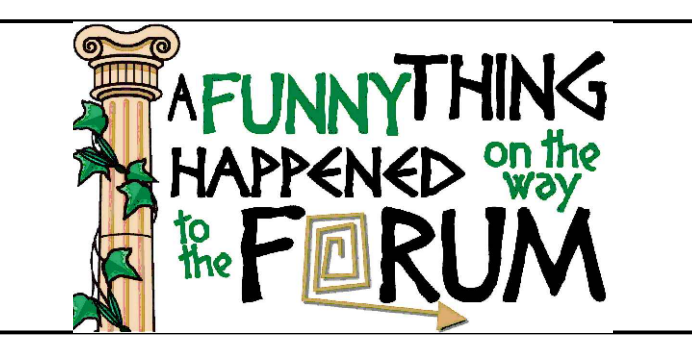
CNC'ed Piece  
File: FORUM-CPH-UNIT A-1.4Maso\_001

- PLATE NOTES**
- 1) MATERIAL: 1/4" Masonite
  - 2) MATERIAL: 3/4" Plywood
  - 3) Front and side facing to be installed after loading.
  - 4) Exposed Steel
  - 5) MATERIAL: 1/4" plywood ripped to 1" high
  - 6) Attach plywood to the 1x1 steel with T-nails as a nailing strip for attaching the front and side facing in the space.
  - 7) All skinning material sits flush with this corner.
  - 8) Side Facing

- GENERAL NOTES**
- 1) RED lines indicate pieces with bolt connections shown in top view.
  - 2) The balcony only has facing on the SL & DS part. The USR part is a toe kick for the stairs. All of this should be added in space.

**SUBMITTALS**

#	DESCRIPTION	DATE
1	Initial Build Drawings	08/27/2018
2		
3		
4		
5		



A FUNNY... FORUM  
ILLINOIS THEATRE  
COLWELL PLAYHOUSE

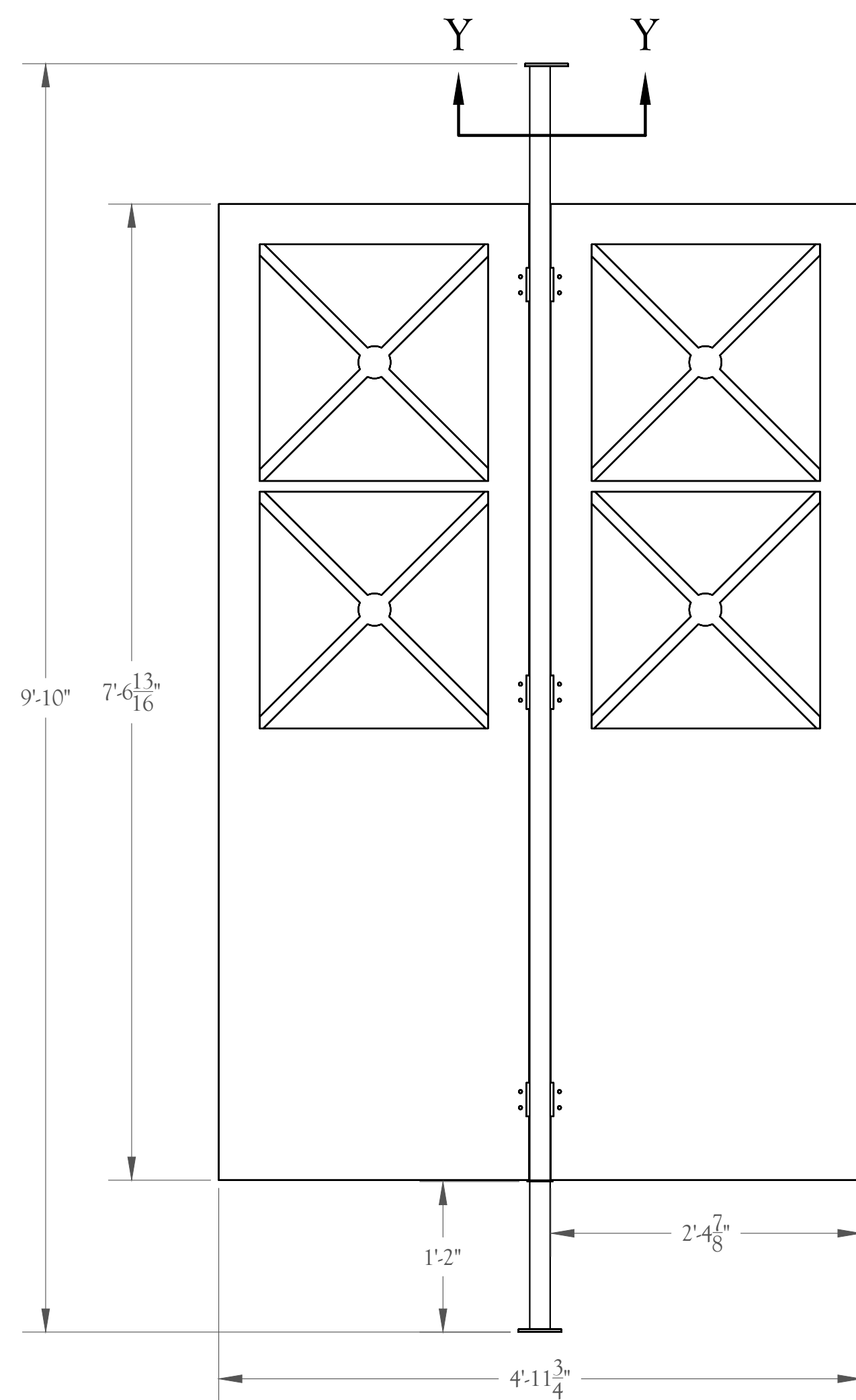
Director J.W. Morrisette	Technical Director Bobby Reynolds
Scenic Designer Regina Garcia/Vil Song	Assistant Technical Director Naomie S. Winch
Stage Manager Kayla Uribe	Master Carpenter Ryan Gadlos

**BALCONY SKIN**

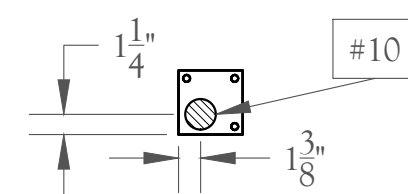
SCALE NOTED = 1'0"	DRAWN BY NSMW
UNIT A BALC-2	BUILT BY

SK1 BALC C Skin Layout  
1" = 1'0" Build 1

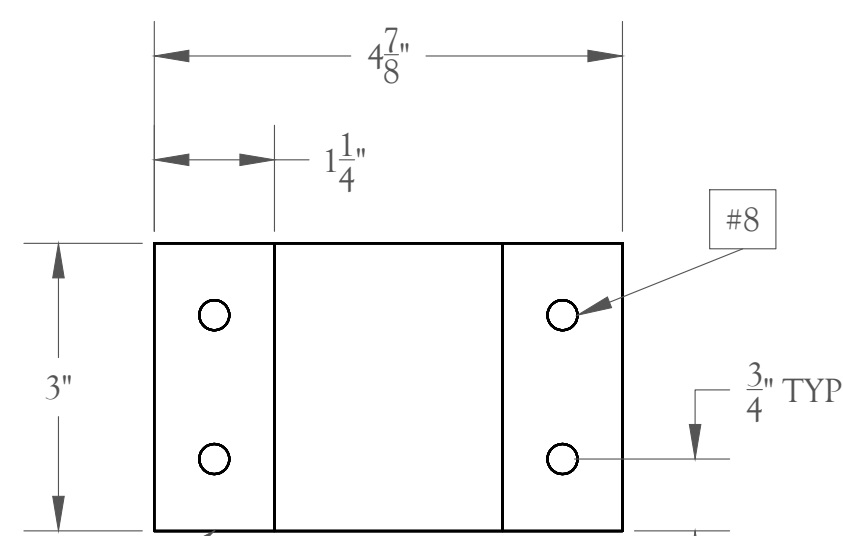




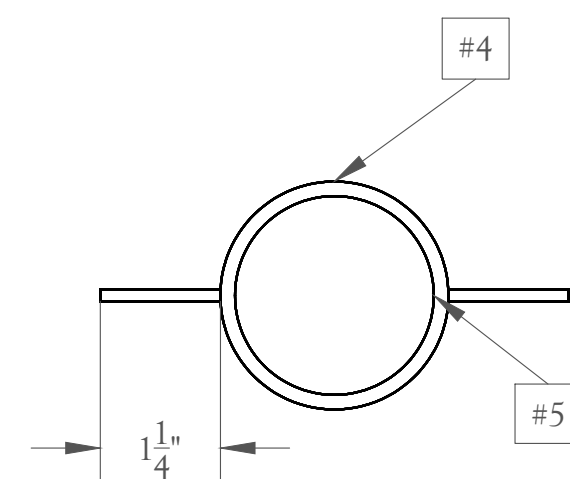
FRONT VIEW



SECTION Y-Y  
SCALE 1" = 1'-0"

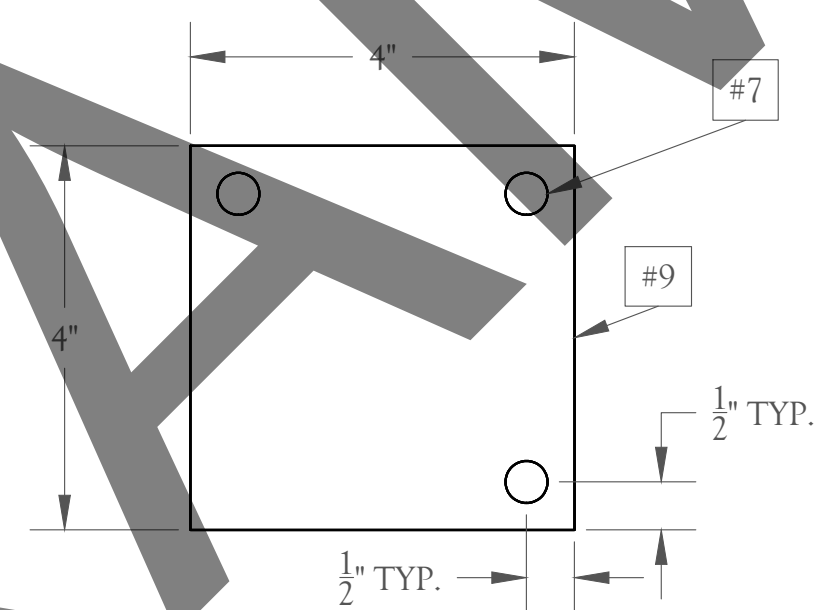


FRONT VIEW



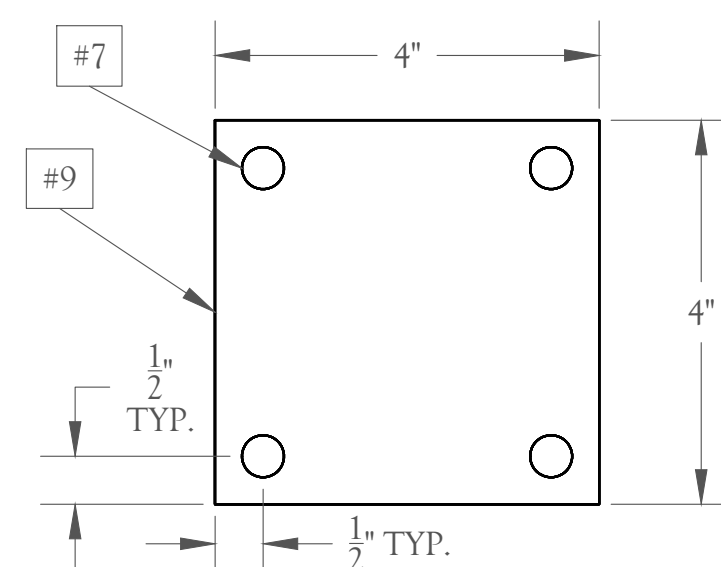
TOP VIEW

D1 Rotating Pieces  
6" = 1" Build 3



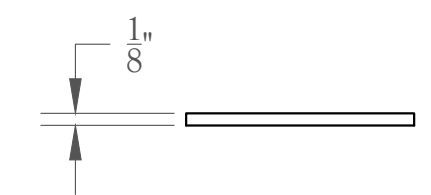
TOP VIEW

D2 Top BALC Connector Plate  
6" = 1" Build 1

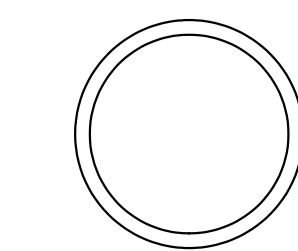


TOP VIEW

D3 Bottom BALC Connector Plate  
6" = 1" Build 1

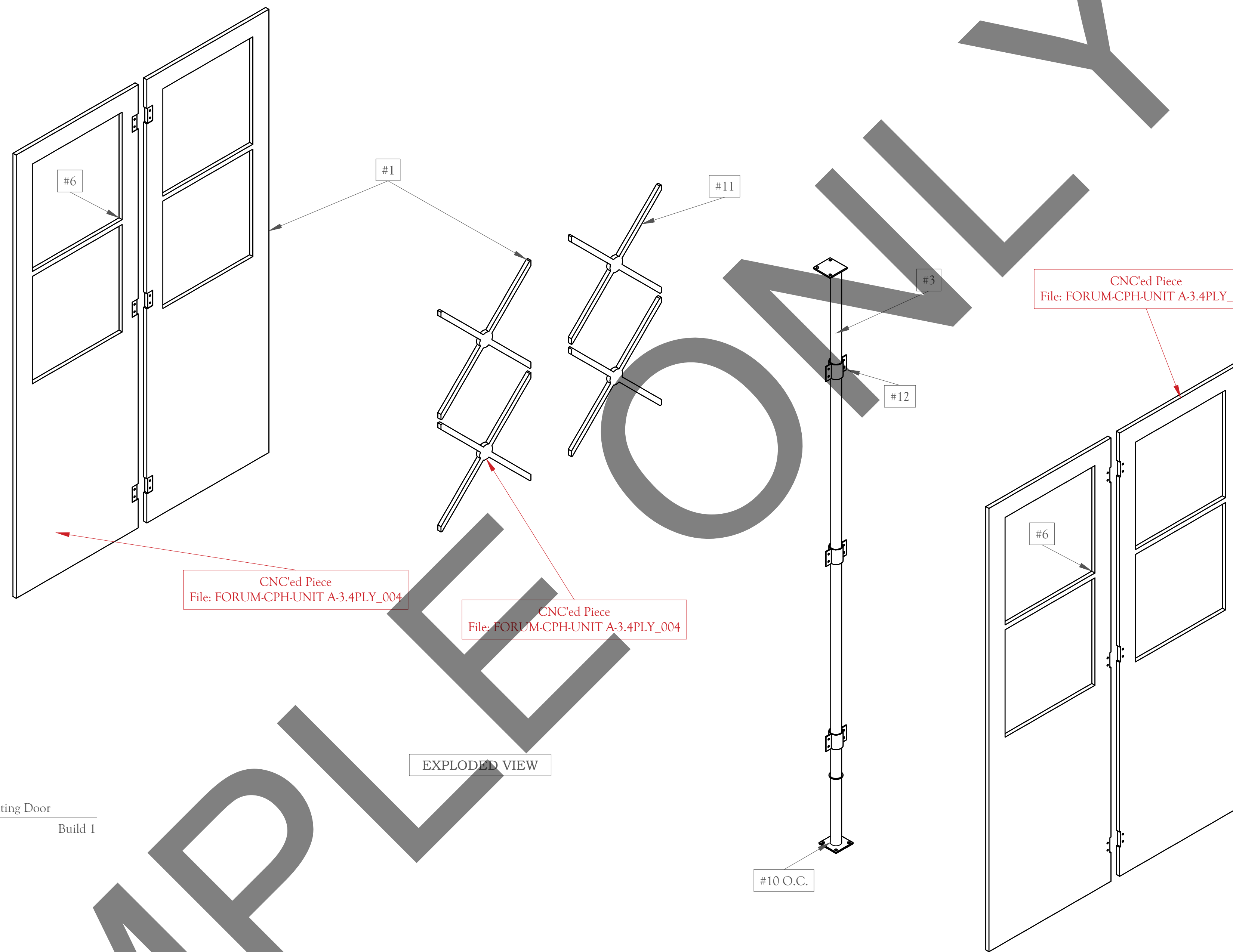


FRONT VIEW



TOP VIEW

D4 Door Stopper  
6" = 1" Build 1



EXPLODED VIEW

M1 WALL B Rotating Door  
1" = 1" Build 1

PLATE NOTES

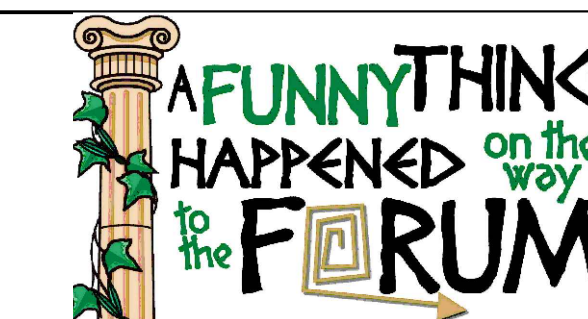
- 1) MATERIAL: 3/4" Plywood
- 2) MATERIAL: 1/8" steel plate
- 3) MATERIAL: 1 1/2" SCH 40 Black Pipe
- 4) MATERIAL: 2" SCH 40 Black Pipe (this has been set aside in the metals area)
- 5) Coat the inside of the 2" pipe with craft felt. See Naomie for questions/materials.
- 6) When completed cover these interior edges with muslin and staple to the front and rear.
- 7) SIZE: Hole size is 7/16" in diameter.
- 8) SIZE: Hole size is 5/16" in diameter.
- 9) MATERIAL: 1/4" steel plate.
- 10) Weld plate to pipe.
- 11) Crosses sit in the middle of the 1 1/2" width created by the sandwiched MDF.
- 12) Do not weld these pieces on.

GENERAL NOTES

- 1) All CNC'd pieces are marked by a RED annotation.
- 2) Finish on door is plether stapled on.

SUBMITTALS

#	DESCRIPTION	DATE
1	Intial Build Drawings	08/27/2018
2		
3		
4		
5		



A FUNNY... FORUM

ILLINOIS THEATRE

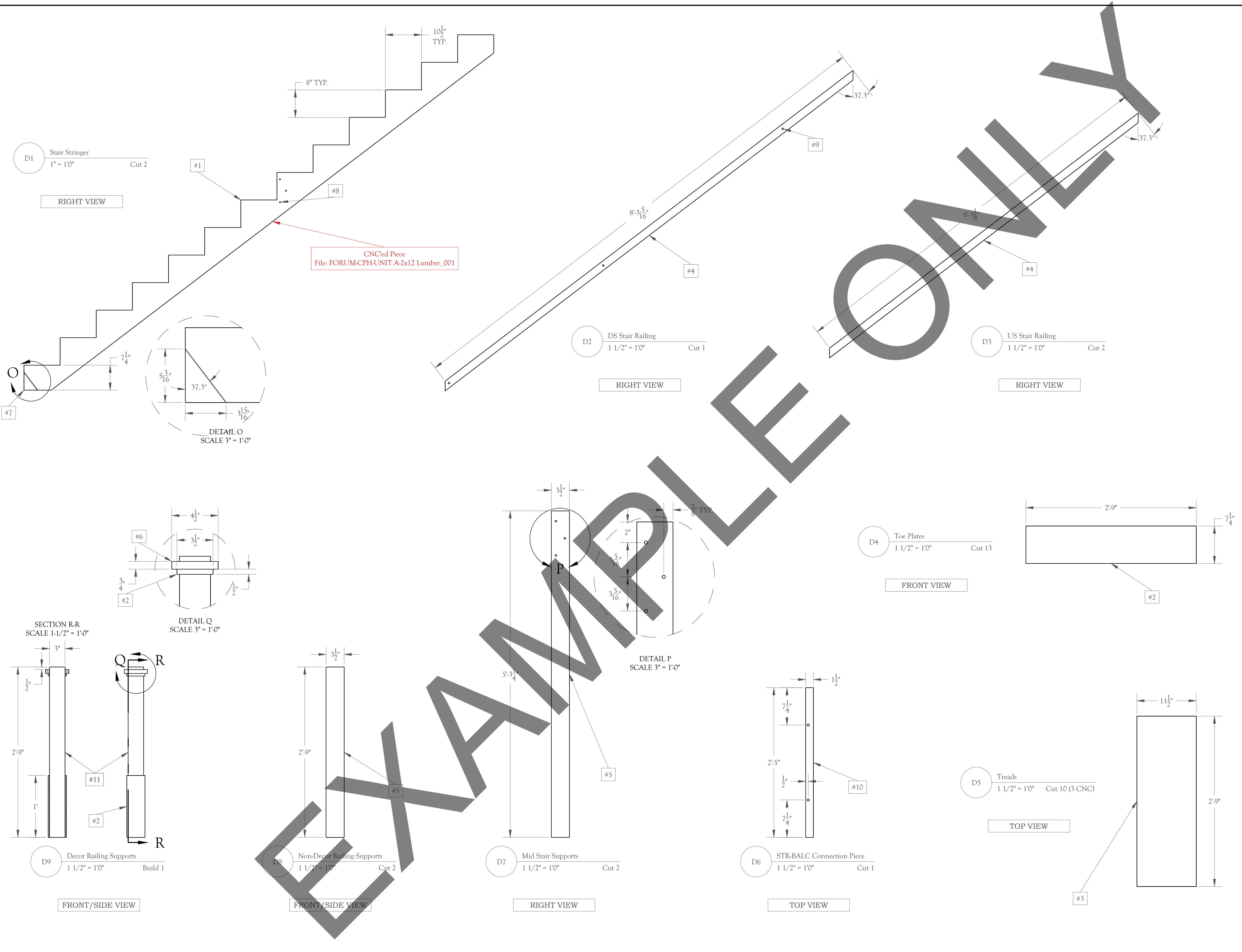
COLWELL PLAYHOUSE

Director J.W. Morrisette	Technical Director Bobby Reynolds
Scenic Designer Regina Garcia/Vil Song	Assistant Technical Director Naomie S. Winch
Stage Manager Kayla Uribe	Master Carpenter Ryan Gadlos

WALL B ROTATING DOOR

SCALE NOTED = 1'0"	DRAWN BY NSMW
-----------------------	------------------

UNIT A WALB-4	BUILT BY
------------------	----------

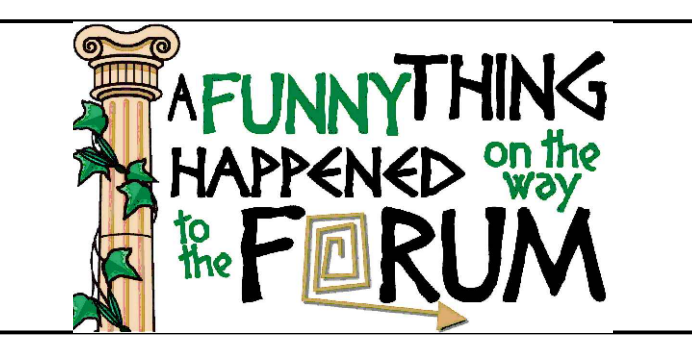


- PLATE NOTES**
- 1) MATERIAL: 2x12 dimensional lumber.
  - 2) MATERIAL: 1/4" masonite.
  - 3) MATERIAL: 3/4" plywod.
  - 4) MATERIAL: Milled 2" x 4" to actual dimensions 1" x 3". Goal is to get rid of the rounded edges.
  - 5) MATERIAL: 4x4 dimensional lumber
  - 6) MATERIAL: 3/4" MDF from scrap.
  - 7) Notch will be cut from scrap 2x12 after it runs through the CNC.
  - 8) SIZE: Hole size is 5/16" and will be cut on the CNC.
  - 9) SIZE: Hole size is 5/16". These holes will be drilled at loadin.
  - 10) MATERIAL: 2x4 dimensional lumber.
  - 11) MATERIAL: Milled 4x4 to actual dimensions 3x3.

- GENERAL NOTES**
- 1) All CNCed pieces are marked by a **RED** annotation.
  - 2) Stairs will be put together with screws with the exception of the bolted midlegs.

**SUBMITTALS**

#	DESCRIPTION	DATE
1	Intial Build Drawings	08/27/2018
2		
3		
4		
5		



A FUNNY... FORUM  
ILLINOIS THEATRE  
COLWELL PLAYHOUSE

Director J.W. Morrisette	Technical Director Bobby Reynolds
Scenic Designer Regina Garcia/Vil Song	Assistant Technical Director Naomie S. Winch
Stage Manager Kayla Urlic	Master Carpenter Ryan Gadlos

**STAIRS COMPONENTS**

SCALE NOTED = 1'0"	DRAWN BY NSMW
UNIT A STR-1	BUILT BY